

## Anti-PGRMC2 antibody

|                 |   |
|-----------------|---|
| <b>Cat. No.</b> | ml122869  |
| <b>Package</b>  | 25 µl/100 µl/200 µl                                     |
| <b>Storage</b>  | -20°C, pH7.4 PBS, 0.05% NaN <sub>3</sub> , 40% Glycerol |

### Product overview

|                     |  |
|---------------------|--|
| <b>Description</b>  | Anti-PGRMC2 rabbit polyclonal antibody |
| <b>Applications</b> | ELISA, WB, IHC                         |
| <b>Immunogen</b>    | Fusion protein of human PGRMC2         |
| <b>Reactivity</b>   | Human, Mouse, Rat                      |
| <b>Content</b>      | 0.6 mg/ml                              |
| <b>Host species</b> | Rabbit                                 |
| <b>Ig class</b>     | Immunogen-specific rabbit IgG          |
| <b>Purification</b> | Antigen affinity purification          |

### Target information

|                  |  |
|------------------|--|
| <b>Symbol</b>    | PGRMC2                                     |
| <b>Full name</b> | progesterone receptor membrane component 2 |
| <b>Synonyms</b>  | DG6; PMBP                                  |
| <b>Swissprot</b> | O15173                                     |

### Target Background

PGRMC2 (progesterone receptor membrane component 2), also known as DG6 (steroid receptor protein DG6) or PMBP (progesterone membrane-binding protein), is a single pass membrane protein belonging to the cytochrome b5 family (MAPR (membrane associated progesterone receptor) subfamily). Expressed in sperm, PGRMC2 is believed to function as a steroid receptor and may participate in the progesterone-dependent sperm acrosome reaction.

订购热线: 4008-898-798

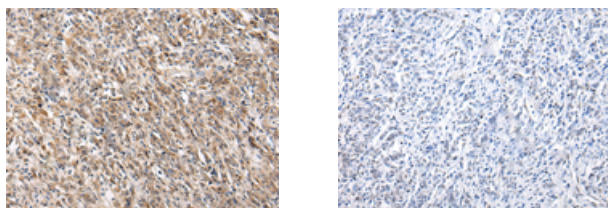
### Applications

#### Immunohistochemistry

Predicted cell location: Cell membrane

Positive control: Human gastric cancer

Recommended dilution: 20-100



The image on the left is immunohistochemistry of paraffin-embedded Human gastric cancer tissue using ml122869(PGRMC2 Antibody) at dilution 1/20, on the right is treated with fusion protein. (Original magnification: ×200)

#### Western blotting

Predicted band size: 24 kDa

Positive control: NIH/3T3 cell

Recommended dilution: 200-1000

Gel: 12%SDS-PAGE

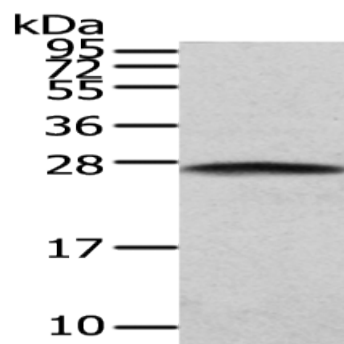
Lysate: 40 µg

Lane: NIH/3T3 cell

Primary antibody: ml122869(PGRMC2 Antibody) at dilution 1/200

Secondary antibody: Goat anti rabbit IgG at 1/8000 dilution

Exposure time: 5 seconds



#### ELISA

Recommended dilution: 1000-2000

联系电话: 4008-898-798, 021-61725725

联系QQ: 2881505695, 2881505696

邮箱: [mlbio\\_cn@yeah.net](mailto:mlbio_cn@yeah.net)

网址: [www.mlbio.cn](http://www.mlbio.cn)