

Anti-PYGL antibody

| | |
|-----------------|---|
| Cat. No. | ml122954 |
| Package | 25 µl/100 µl/200 µl |
| Storage | -20°C, pH7.4 PBS, 0.05% NaN ₃ , 40% Glycerol |

Product overview

| | |
|---------------------|--------------------------------------|
| Description | Anti-PYGL rabbit polyclonal antibody |
| Applications | ELISA, WB, IHC |
| Immunogen | Fusion protein of human PYGL |
| Reactivity | Human, Mouse, Rat |
| Content | 0.4 mg/ml |
| Host species | Rabbit |
| Ig class | Immunogen-specific rabbit IgG |
| Purification | Antigen affinity purification |

Target information

| | |
|------------------|--------------------------------|
| Symbol | PYGL |
| Full name | phosphorylase, glycogen, liver |
| Synonyms | GSD6 |
| Swissprot | P06737 |

Target Background

This gene encodes a homodimeric protein that catalyses the cleavage of alpha-1,4-glucosidic bonds to release glucose-1-phosphate from liver glycogen stores. This protein switches from inactive phosphorylase B to active phosphorylase A by phosphorylation of serine residue 15. Activity of this enzyme is further regulated by multiple allosteric effectors and hormonal controls. Humans have three glycogen phosphorylase genes that encode distinct isozymes that are primarily expressed in liver, brain and muscle, respectively.

订购热线: 4008-898-798

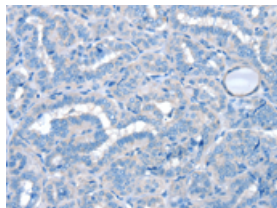
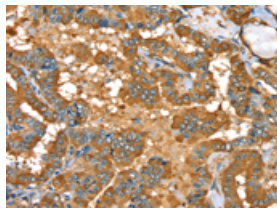
Applications

Immunohistochemistry

Predicted cell location: Cytoplasm

Positive control: Human thyroid cancer

Recommended dilution: 30-150

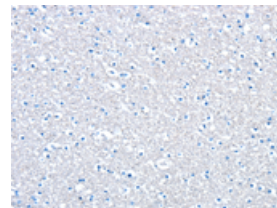
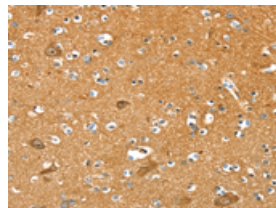


The image on the left is immunohistochemistry of paraffin-embedded Human thyroid cancer tissue using ml122954(PYGL Antibody) at dilution 1/35, on the right is treated with fusion protein. (Original magnification: $\times 200$)

Predicted cell location: Cytoplasm

Positive control: Human brain

Recommended dilution: 30-150



The image on the left is immunohistochemistry of paraffin-embedded Human brain tissue using ml122954(PYGL Antibody) at dilution 1/35, on the right is treated with fusion protein. (Original magnification: $\times 200$)

Western blotting

Predicted band size: 97 kDa

Positive control: 231 and PC3 cells

Recommended dilution: 500-2000

Gel: 6%SDS-PAGE

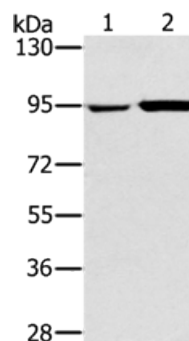
Lysate: 40 μ g

Lane 1-2: 231 cells, PC3 cells

Primary antibody: ml122954(PYGL Antibody) at dilution 1/400

Secondary antibody: Goat anti rabbit IgG at 1/8000 dilution

Exposure time: 20 seconds



ELISA

Recommended dilution: 2000-5000

联系电话: 4008-898-798, 021-61725725

联系QQ: 2881505695, 2881505696

邮箱: mlbio_cn@yeah.net

网址: www.mlbio.cn