

Anti-RAB27A antibody

Cat. No.	ml122960
Package	25 µl/100 µl/200 µl
Storage	-20°C, pH7.4 PBS, 0.05% NaN ₃ , 40% Glycerol

Product overview

Description	Anti-RAB27A rabbit polyclonal antibody
Applications	ELISA, WB, IHC
Immunogen	Fusion protein of human RAB27A
Reactivity	Human, Mouse, Rat
Content	0.4 mg/ml
Host species	Rabbit
Ig class	Immunogen-specific rabbit IgG
Purification	Antigen affinity purification

Target information

Symbol	RAB27A
Full name	RAB27A, member RAS oncogene family
Synonyms	GS2; RAM; RAB27; HsT18676
Swissprot	P51159

Target Background

The protein encoded by this gene belongs to the small GTPase superfamily, Rab family. The protein is membrane-bound and may be involved in protein transport and small GTPase mediated signal transduction. Mutations in this gene are associated with Griscelli syndrome type 2. Alternative splicing occurs at this locus and four transcript variants encoding the same protein have been identified.

订购热线: 4008-898-798

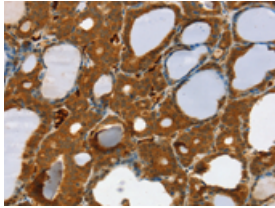
Applications

Immunohistochemistry

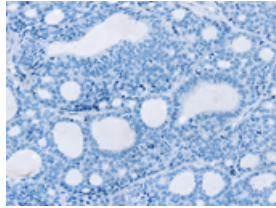
Predicted cell location: Cytoplasm

Positive control: Human thyroid cancer

Recommended dilution: 25-100



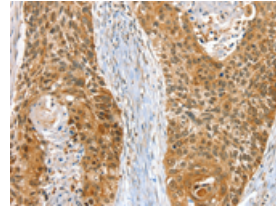
The image on the left is immunohistochemistry of paraffin-embedded Human thyroid cancer tissue using ml122960(RAB27A Antibody) at dilution 1/30, on the right is treated with fusion protein. (Original magnification: $\times 200$)



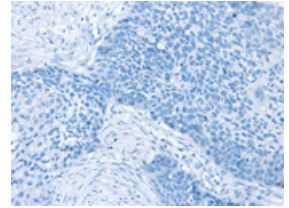
Predicted cell location: Cytoplasm

Positive control: Human esophagus cancer

Recommended dilution: 25-100



The image on the left is immunohistochemistry of paraffin-embedded Human esophagus cancer tissue using ml122960(RAB27A Antibody) at dilution 1/30, on the right is treated with fusion protein. (Original magnification: $\times 200$)



Western blotting

Predicted band size: 25 kDa

Positive control: K562 cells

Recommended dilution: 500-2000

Gel: 8%SDS-PAGE

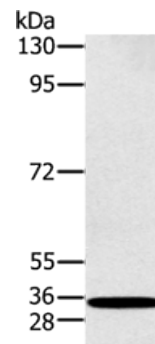
Lysate: 40 μ g

Lane: K562 cells

Primary antibody: ml122960(RAB27A Antibody) at dilution 1/400

Secondary antibody: Goat anti rabbit IgG at 1/8000 dilution

Exposure time: 30 seconds



ELISA

Recommended dilution: 2000-5000

联系电话: 4008-898-798, 021-61725725

联系QQ: 2881505695, 2881505696

邮箱: mlbio_cn@yeah.net

网址: www.mlbio.cn