

## Anti-RPA2 antibody

<b>Cat. No.</b>	ml123054
<b>Package</b>	25 µl/100 µl/200 µl
<b>Storage</b>	-20°C, pH7.4 PBS, 0.05% NaN <sub>3</sub> , 40% Glycerol

### Product overview

<b>Description</b>	Anti-RPA2 rabbit polyclonal antibody
<b>Applications</b>	ELISA, WB, IHC
<b>Immunogen</b>	Full length fusion protein
<b>Reactivity</b>	Human
<b>Content</b>	0.7 mg/ml
<b>Host species</b>	Rabbit
<b>Ig class</b>	Immunogen-specific rabbit IgG
<b>Purification</b>	Antigen affinity purification

### Target information

<b>Symbol</b>	RPA2
<b>Full name</b>	replication protein A2, 32kDa
<b>Synonyms</b>	REPA2; RPA32; RP-A p32; RP-A p34
<b>Swissprot</b>	P15927

### Target Background

Replication protein A 32 kDa subunit is a protein that in humans is encoded by the RPA2 gene. As part of the heterotrimeric replication protein A complex (RPA/RP-A), binds and stabilizes single-stranded DNA intermediates, that form during DNA replication or upon DNA stress. It prevents their reannealing and in parallel, recruits and activates different proteins and complexes involved in DNA metabolism. Thereby, it plays an essential role both in DNA replication and the cellular response to DNA damage.

订购热线: 4008-898-798

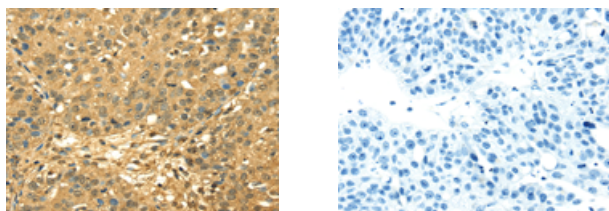
## Applications

### Immunohistochemistry

Predicted cell location: Nucleus and Cytoplasm

Positive control: Human breast cancer

Recommended dilution: 30-150



The image on the left is immunohistochemistry of paraffin-embedded Human breast cancer tissue using ml123054(RPA2 Antibody) at dilution 1/45, on the right is treated with fusion protein. (Original magnification:  $\times 200$ )

### Western blotting

Predicted band size: 29 kDa

Positive control: Hela, huvec, HepG2, A549, Jurkat, 231 and A431 cells

Recommended dilution: 500-2000

Gel: 12% SDS-PAGE

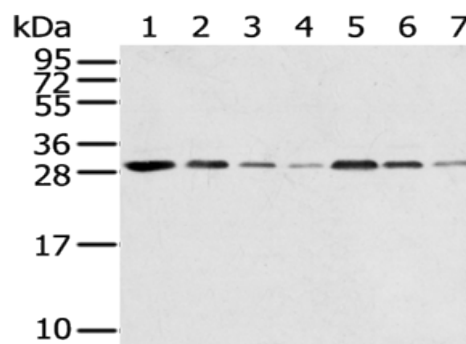
Lysate: 40  $\mu$ g

Lane 1-7: Hela cells, HUVEC cells, HepG2 cells, A549 cells, Jurkat cells, 231 cells, A431 cells

Primary antibody: ml123054(RPA2 Antibody) at dilution 1/650

Secondary antibody: Goat anti rabbit IgG at 1/8000 dilution

Exposure time: 10 seconds



### ELISA

Recommended dilution: 2000-5000

联系电话: 4008-898-798, 021-61725725

联系QQ: 2881505695, 2881505696

邮箱: [mlbio\\_cn@yeah.net](mailto:mlbio_cn@yeah.net)

网址: [www.mlbio.cn](http://www.mlbio.cn)