

## Anti-RPS3 antibody

<b>Cat. No.</b>	ml123063
<b>Package</b>	25 µl/100 µl/200 µl
<b>Storage</b>	-20°C, pH7.4 PBS, 0.05% NaN <sub>3</sub> , 40% Glycerol

### Product overview

<b>Description</b>	Anti-RPS3 rabbit polyclonal antibody
<b>Applications</b>	ELISA, WB, IHC
<b>Immunogen</b>	Full length fusion protein
<b>Reactivity</b>	Human, Mouse, Rat
<b>Content</b>	0.3 mg/ml
<b>Host species</b>	Rabbit
<b>Ig class</b>	Immunogen-specific rabbit IgG
<b>Purification</b>	Antigen affinity purification

### Target information

<b>Symbol</b>	RPS3
<b>Full name</b>	ribosomal protein S3
<b>Synonyms</b>	S3
<b>Swissprot</b>	P23396

### Target Background

Ribosomes, the organelles that catalyze protein synthesis, consist of a small 40S subunit and a large 60S subunit. Together these subunits are composed of 4 RNA species and approximately 80 structurally distinct proteins. This gene encodes a ribosomal protein that is a component of the 40S subunit, where it forms part of the domain where translation is initiated. The protein belongs to the S3P family of ribosomal proteins. Studies of the mouse and rat proteins have demonstrated that the protein has an extraribosomal role as an endonuclease involved in the repair of UV-induced DNA damage.

订购热线: 4008-898-798

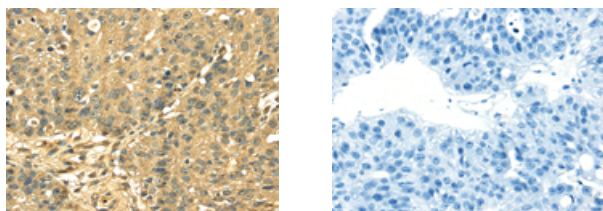
### Applications

#### Immunohistochemistry

Predicted cell location: Cytoplasm

Positive control: Human breast cancer

Recommended dilution: 25-100



The image on the left is immunohistochemistry of paraffin-embedded Human breast cancer tissue using ml123063(RPS3 Antibody) at dilution 1/25, on the right is treated with fusion protein. (Original magnification:  $\times 200$ )

#### Western blotting

Predicted band size: 27 kDa

Positive control: HepG2, Jurkat, Hela, Raji, RAW264.7, A549 and 293T cells

Recommended dilution: 500-2000

Gel: 12% SDS-PAGE

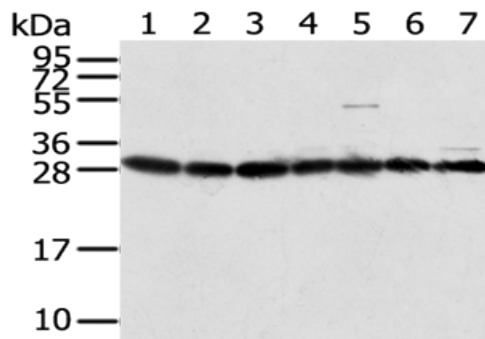
Lysate: 40  $\mu$ g

Lane 1-7: HepG2 cells, Jurkat cells, Hela cells, Raji cells, RAW264.7 cells, A549 cells, 293T cells

Primary antibody: ml123063(RPS3 Antibody) at dilution 1/350

Secondary antibody: Goat anti rabbit IgG at 1/8000 dilution

Exposure time: 10 seconds



#### ELISA

Recommended dilution: 2000-5000

联系电话: 4008-898-798, 021-61725725

联系QQ: 2881505695, 2881505696

邮箱: [mlbio\\_cn@yeah.net](mailto:mlbio_cn@yeah.net)

网址: [www.mlbio.cn](http://www.mlbio.cn)