

Anti-HELLS antibody

Cat. No.	ml123182
Package	25 µl/100 µl/200 µl
Storage	-20°C, pH7.4 PBS, 0.05% NaN ₃ , 40% Glycerol

Product overview

Description	Anti-HELLS rabbit polyclonal antibody
Applications	ELISA, WB, IHC
Immunogen	Fusion protein of human HELLS
Reactivity	Human, Mouse
Content	1 mg/ml
Host species	Rabbit
Ig class	Immunogen-specific rabbit IgG
Purification	Antigen affinity purification

Target information

Symbol	HELLS
Full name	helicase, lymphoid-specific
Synonyms	LSH; PASG; SMARCA6; Nbla10143
Swissprot	Q9NRZ9

Target Background

This gene encodes a lymphoid-specific helicase. Other helicases function in processes involving DNA strand separation, including replication, repair, recombination, and transcription. This protein is thought to be involved with cellular proliferation and may play a role in leukemogenesis. Alternatively spliced transcript variants encoding different isoforms have been identified.

订购热线: 4008-898-798

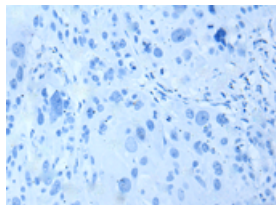
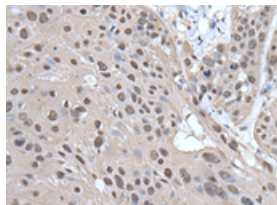
Applications

Immunohistochemistry

Predicted cell location: Nucleus

Positive control: Human esophagus cancer

Recommended dilution: 40-250

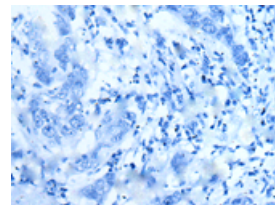
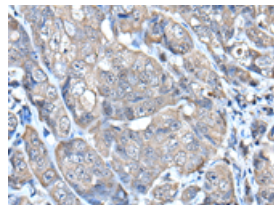


The image on the left is immunohistochemistry of paraffin-embedded Human esophagus cancer tissue using ml123182(HELLS Antibody) at dilution 1/65, on the right is treated with fusion protein. (Original magnification: $\times 200$)

Predicted cell location: Nucleus

Positive control: Human breast cancer

Recommended dilution: 40-250



The image on the left is immunohistochemistry of paraffin-embedded Human breast cancer tissue using ml123182(HELLS Antibody) at dilution 1/65, on the right is treated with fusion protein. (Original magnification: $\times 200$)

Western blotting

Predicted band size: 97 kDa

Positive control: HEPG2 cell lysate

Recommended dilution: 1000-5000

Gel: 6% SDS-PAGE

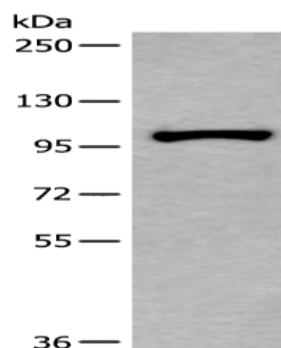
Lysate: 40 μ g

Lane: HEPG2 cell lysate

Primary antibody: ml123182(HELLS Antibody) at dilution 1/800

Secondary antibody: Goat anti rabbit IgG at 1/8000 dilution

Exposure time: 10 seconds



ELISA

Recommended dilution: 5000-10000

联系电话: 4008-898-798, 021-61725725

联系QQ: 2881505695, 2881505696

邮箱: mlbio_cn@yeah.net

网址: www.mlbio.cn