

Anti-SNAP23 antibody

Cat. No.	ml123191
Package	25 µl/100 µl/200 µl
Storage	-20°C, pH7.4 PBS, 0.05% NaN ₃ , 40% Glycerol

Product overview

Description	Anti-SNAP23 rabbit polyclonal antibody
Applications	ELISA, WB, IHC
Immunogen	Full length fusion protein
Reactivity	Human, Mouse, Rat
Content	0.2 mg/ml
Host species	Rabbit
Ig class	Immunogen-specific rabbit IgG
Purification	Antigen affinity purification

Target information

Symbol	SNAP23
Full name	synaptosomal-associated protein, 23kDa
Synonyms	SNAP-23; SNAP23A; SNAP23B; HsT17016
Swissprot	O00161

Target Background

Specificity of vesicular transport is regulated, in part, by the interaction of a vesicle-associated membrane protein termed synaptobrevin/VAMP with a target compartment membrane protein termed syntaxin. These proteins, together with SNAP25 (synaptosome-associated protein of 25 kDa), form a complex which serves as a binding site for the general membrane fusion machinery.

Applications

Immunohistochemistry

Predicted cell location: Cytoplasm and Cell membrane

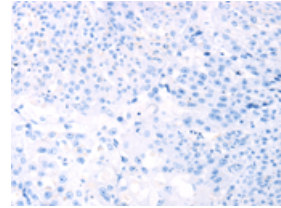
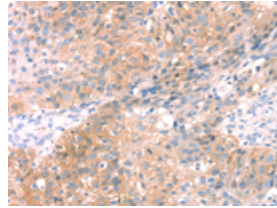
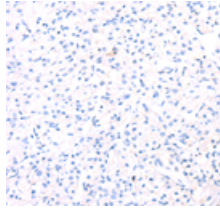
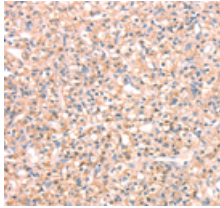
Positive control: Human prostate cancer

Recommended dilution: 25-100

Predicted cell location: Cytoplasm and Cell membrane

Positive control: Human breast cancer

Recommended dilution: 25-100



The image on the left is immunohistochemistry of paraffin-embedded Human prostate cancer tissue using ml123191(SNAP23 Antibody) at dilution 1/25, on the right is treated with fusion protein. (Original magnification: $\times 200$)

The image on the left is immunohistochemistry of paraffin-embedded Human breast cancer tissue using ml123191(SNAP23 Antibody) at dilution 1/25, on the right is treated with fusion protein. (Original magnification: $\times 200$)

Western blotting

Predicted band size: 23 kDa

Positive control: Human placenta tissue and hela cells, hepg2 cells and human fetal liver tissue, A549 cells and human normal kidney tissue

Recommended dilution: 500-2000

Gel: 12% SDS-PAGE

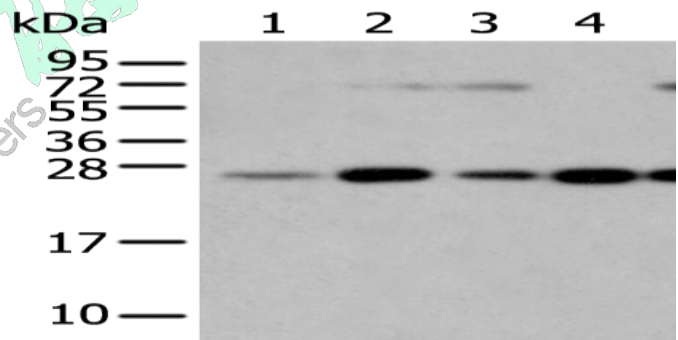
Lysate: 40 μ g

Lane 1-6: Human placenta tissue, hela cells, hepg2 cells, human fetal liver tissue, A549 cells, human normal kidney tissue

Primary antibody: ml123191(SNAP23 Antibody) at dilution 1/400

Secondary antibody: Goat anti rabbit IgG at 1/8000 dilution

Exposure time: 15 seconds



ELISA

Recommended dilution: 5000-10000

联系电话: 4008-898-798, 021-61725725

联系QQ: 2881505695, 2881505696

邮箱: mlbio_cn@yeah.net



订购热线: 4008-898-798

网址: www.mlbio.cn