

Anti-SULT2B1 antibody

Cat. No.	ml123257
Package	25 µl/100 µl/200 µl
Storage	-20°C, pH7.4 PBS, 0.05% NaN ₃ , 40% Glycerol

Product overview

Description	Anti-SULT2B1 rabbit polyclonal antibody
Applications	ELISA, WB, IHC
Immunogen	Fusion protein of human SULT2B1
Reactivity	Human
Content	0.4 mg/ml
Host species	Rabbit
Ig class	Immunogen-specific rabbit IgG
Purification	Antigen affinity purification

Target information

Symbol	SULT2B1
Full name	sulfotransferase family, cytosolic, 2B, member 1
Synonyms	HSST2
Swissprot	O00204

Target Background

Sulfotransferase enzymes catalyze the sulfate conjugation of many hormones, neurotransmitters, drugs, and xenobiotic compounds. These cytosolic enzymes are different in their tissue distributions and substrate specificities. The gene structure (number and length of exons) is similar among family members. This gene sulfates dehydroepiandrosterone but not 4-nitrophenol, a typical substrate for the phenol and estrogen sulfotransferase subfamilies. Two alternatively spliced variants that encode different isoforms have been described.

订购热线: 4008-898-798

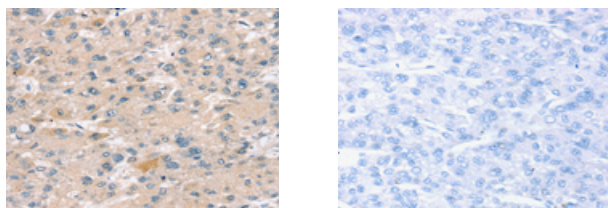
Applications

Immunohistochemistry

Predicted cell location: Cytoplasm

Positive control: Human liver cancer

Recommended dilution: 10-50



The image on the left is immunohistochemistry of paraffin-embedded Human liver cancer tissue using ml123257(SULT2B1 Antibody) at dilution 1/25, on the right is treated with fusion protein. (Original magnification: $\times 200$)

Western blotting

Predicted band size: 41 kDa

Positive control: 231 cells

Recommended dilution: 500-2000

Gel: 8%SDS-PAGE

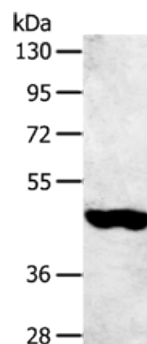
Lysate: 60 μ g

Lane: 231 cells

Primary antibody: ml123257(SULT2B1 Antibody) at dilution 1/800

Secondary antibody: Goat anti rabbit IgG at 1/8000 dilution

Exposure time: 5 minutes



ELISA

Recommended dilution: 2000-5000

联系电话: 4008-898-798, 021-61725725

联系QQ: 2881505695, 2881505696

邮箱: mlbio_cn@yeah.net

网址: www.mlbio.cn