

Anti-LEFTY2 antibody

Cat. No.	ml123312
Package	25 µl/100 µl/200 µl
Storage	-20°C, pH7.4 PBS, 0.05% NaN ₃ , 40% Glycerol

Product overview

Description	Anti-LEFTY2 rabbit polyclonal antibody
Applications	ELISA, WB, IHC
Immunogen	Full length fusion protein
Reactivity	Human, Mouse
Content	0.2 mg/ml
Host species	Rabbit
Ig class	Immunogen-specific rabbit IgG
Purification	Antigen affinity purification

Target information

Symbol	LEFTY2
Full name	left-right determination factor 2
Synonyms	EBAF; LEFTA; TGFB4; LEFTYA
Swissprot	O00292

Target Background

This gene encodes a member of the TGF-beta family of proteins. The encoded protein is secreted and plays a role in left-right asymmetry determination of organ systems during development. The protein may also play a role in endometrial bleeding. Mutations in this gene have been associated with left-right axis malformations, particularly in the heart and lungs. Some types of infertility have been associated with dysregulated expression of this gene in the endometrium. Alternative processing of this protein can yield three different products. This gene is closely linked to both a related family member and a related pseudogene. Alternate splicing of this gene results in multiple transcript variants.

订购热线: 4008-898-798

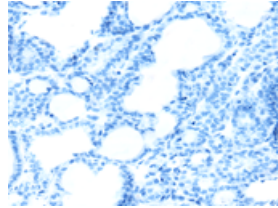
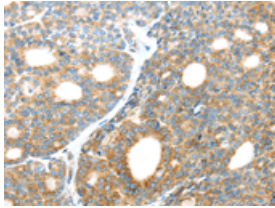
Applications

Immunohistochemistry

Predicted cell location: Cytoplasm and Cell membrane

Positive control: Human thyroid cancer

Recommended dilution: 25-100

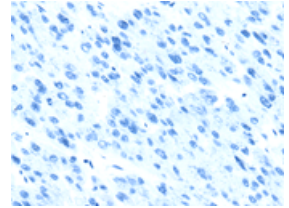
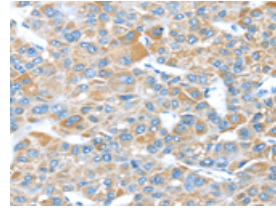


The image on the left is immunohistochemistry of paraffin-embedded Human thyroid cancer tissue using ml123312(LEFTY2 Antibody) at dilution 1/35, on the right is treated with fusion protein. (Original magnification: $\times 200$)

Predicted cell location: Cytoplasm and Cell membrane

Positive control: Human liver cancer

Recommended dilution: 25-100



The image on the left is immunohistochemistry of paraffin-embedded Human liver cancer tissue using ml123312(LEFTY2 Antibody) at dilution 1/35, on the right is treated with fusion protein. (Original magnification: $\times 200$)

Western blotting

Predicted band size: 41 kDa

Positive control: 293T cells

Recommended dilution: 500-2000

Gel: 8%SDS-PAGE

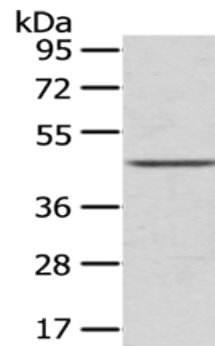
Lysate: 40 μ g

Lane: 293T cells

Primary antibody: ml123312(LEFTY2 Antibody) at dilution 1/800

Secondary antibody: Goat anti rabbit IgG at 1/8000 dilution

Exposure time: 30 seconds



ELISA

Recommended dilution: 2000-5000

联系电话: 4008-898-798, 021-61725725

联系QQ: 2881505695, 2881505696

邮箱: mlbio_cn@yeah.net

网址: www.mlbio.cn