

Anti-TIA1 antibody

Cat. No.	ml123330
Package	25 µl/100 µl/200 µl
Storage	-20°C, pH7.4 PBS, 0.05% NaN ₃ , 40% Glycerol

Product overview

Description	Anti-TIA1 rabbit polyclonal antibody
Applications	ELISA, WB, IHC
Immunogen	Full length fusion protein
Reactivity	Human, Mouse
Content	1 mg/ml
Host species	Rabbit
Ig class	Immunogen-specific rabbit IgG
Purification	Antigen affinity purification

Target information

Symbol	TIA1
Full name	TIA1 cytotoxic granule-associated RNA binding protein
Synonyms	WDM; TIA-1
Swissprot	P31483

Target Background

The product encoded by this gene is a member of a RNA-binding protein family and possesses nucleolytic activity against cytotoxic lymphocyte (CTL) target cells. It has been suggested that this protein may be involved in the induction of apoptosis as it preferentially recognizes poly(A) homopolymers and induces DNA fragmentation in CTL targets. The major granule-associated species is a 15-kDa protein that is thought to be derived from the carboxyl terminus of the 40-kDa product by proteolytic processing. Alternative splicing resulting in different isoforms of this gene product has been described in the literature.

订购热线: 4008-898-798

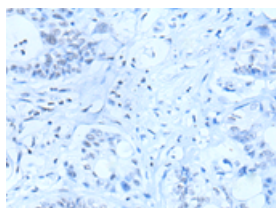
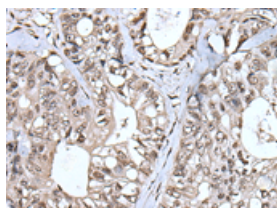
Applications

Immunohistochemistry

Predicted cell location: Nucleus

Positive control: Human colorectal cancer

Recommended dilution: 40-250

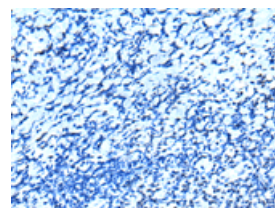
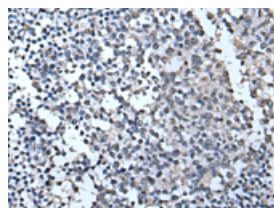


The image on the left is immunohistochemistry of paraffin-embedded Human colorectal cancer tissue using ml123330(TIA1 Antibody) at dilution 1/55, on the right is treated with fusion protein. (Original magnification: $\times 200$)

Predicted cell location: Nucleus

Positive control: Human tonsil

Recommended dilution: 40-250



The image on the left is immunohistochemistry of paraffin-embedded Human tonsil tissue using ml123330(TIA1 Antibody) at dilution 1/55, on the right is treated with fusion protein. (Original magnification: $\times 200$)

Western blotting

Predicted band size: 43 kDa

Positive control: HEPG2 and NIH/3T3 cell lysates

Recommended dilution: 1000-5000

Gel: 8%SDS-PAGE

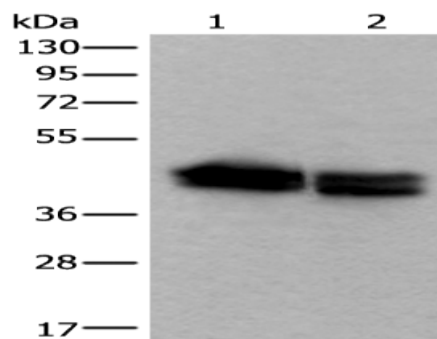
Lysate: 40 μ g

Lane 1-2: HEPG2 and NIH/3T3 cell lysates

Primary antibody: ml123330(TIA1 Antibody) at dilution 1/600

Secondary antibody: Goat anti rabbit IgG at 1/8000 dilution

Exposure time: 1 second



ELISA

Recommended dilution: 5000-10000

联系电话: 4008-898-798, 021-61725725

联系QQ: 2881505695, 2881505696

邮箱: mlbio_cn@yeah.net

网址: www.mlbio.cn