

## Anti-UQCRC1 antibody

<b>Cat. No.</b>	ml123504
<b>Package</b>	25 µl/100 µl/200 µl
<b>Storage</b>	-20°C, pH7.4 PBS, 0.05% NaN <sub>3</sub> , 40% Glycerol

### Product overview

<b>Description</b>	Anti-UQCRC1 rabbit polyclonal antibody
<b>Applications</b>	ELISA, WB, IHC
<b>Immunogen</b>	Fusion protein of human UQCRC1
<b>Reactivity</b>	Human, Mouse, Rat
<b>Content</b>	0.7 mg/ml
<b>Host species</b>	Rabbit
<b>Ig class</b>	Immunogen-specific rabbit IgG
<b>Purification</b>	Antigen affinity purification

### Target information

<b>Symbol</b>	UQCRC1
<b>Full name</b>	ubiquinol-cytochrome c reductase core protein I
<b>Synonyms</b>	QCR1; UQCR1; D3S3191
<b>Swissprot</b>	P31930

### Target Background

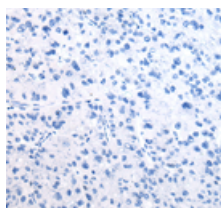
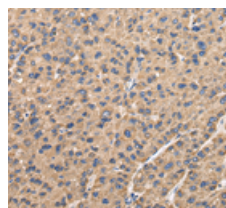
Cytochrome b-c1 complex subunit 1, mitochondrial is a protein that in humans is encoded by the UQCRC1 gene. This is a component of the ubiquinol-cytochrome c reductase complex (complex III or cytochrome b-c1 complex), which is part of the mitochondrial respiratory chain. This protein may mediate formation of the complex between cytochromes c and c1.

订购热线: 4008-898-798

## Applications

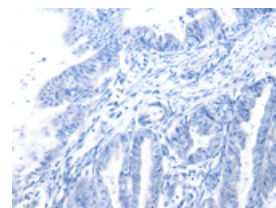
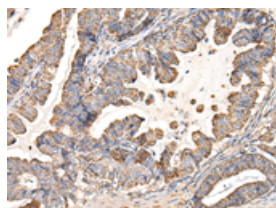
### Immunohistochemistry

Predicted cell location: Cytoplasm  
Positive control: Human liver cancer  
Recommended dilution: 25-100



The image on the left is immunohistochemistry of paraffin-embedded Human liver cancer tissue using ml123504(UQCRC1 Antibody) at dilution 1/35, on the right is treated with fusion protein. (Original magnification: ×200)

Predicted cell location: Cytoplasm  
Positive control: Human esophagus cancer  
Recommended dilution: 25-100



The image on the left is immunohistochemistry of paraffin-embedded Human esophagus cancer tissue using ml123504(UQCRC1 Antibody) at dilution 1/35, on the right is treated with fusion protein. (Original magnification: ×200)

### Western blotting

Predicted band size: 53 kDa  
Positive control: 293T, hela and A431 cell, human fetal brain tissue and 231 cell, lo2 cell and mouse heart tissue  
Recommended dilution: 500-2000

Gel: 8%SDS-PAGE

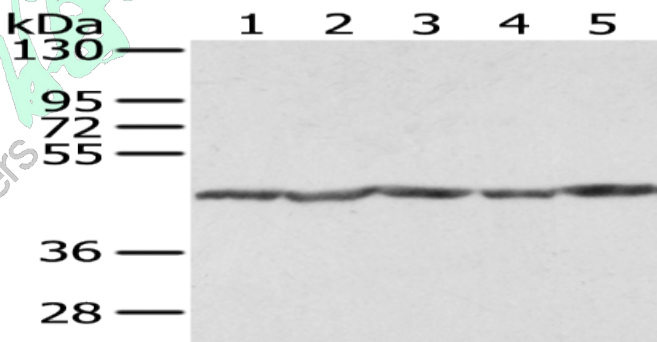
Lysate: 40 µg

Lane 1-7: 293T, hela and A431 cell, human fetal brain tissue and 231 cell, lo2 cell and mouse heart tissue

Primary antibody: ml123504(UQCRC1 Antibody) at dilution 1/800

Secondary antibody: Goat anti rabbit IgG at 1/8000 dilution

Exposure time: 1 second



### ELISA

Recommended dilution: 2000-5000

联系电话: 4008-898-798, 021-61725725

联系QQ: 2881505695, 2881505696

邮箱: [mlbio\\_cn@yeah.net](mailto:mlbio_cn@yeah.net)

网址: [www.mlbio.cn](http://www.mlbio.cn)