

Anti-MORC2 antibody

Cat. No.	ml123592
Package	25 µl/100 µl/200 µl
Storage	-20°C, pH7.4 PBS, 0.05% NaN ₃ , 40% Glycerol

Product overview

Description	Anti-MORC2 rabbit polyclonal antibody
Applications	ELISA, WB, IHC
Immunogen	Fusion protein of human MORC2
Reactivity	Human
Content	0.5 mg/ml
Host species	Rabbit
Ig class	Immunogen-specific rabbit IgG
Purification	Antigen affinity purification

Target information

Symbol	MORC2
Full name	MORC family CW-type zinc finger 2
Synonyms	ZCW3; ZCWCC1
Swissprot	Q9Y6X9

Target Background

The CW domain is a structural module found in many vertebrate, parasitic and plant proteins. It consists of a mononuclear four-cysteine zinc-finger domain that plays a role in DNA binding, chromatin methylation and early embryonic development. ZCWCC1 (zinc finger CW-type coiled-coil domain protein 1), also known as MORC2 (MORC family CW-type zinc finger protein 2) or ZCW3, is a 1,032 amino acid protein that contains one CW-type zinc finger domain. ZCWCC1 is located on chromosome 22 and is ubiquitously expressed with highest expression in pancreas, smooth muscle and testis. Expression of ZCWCC1 is upregulated in hypoxia, a pathological condition characterized by an inadequate supply of oxygen in the blood.

订购热线: 4008-898-798

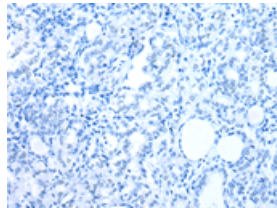
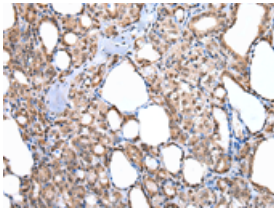
Applications

Immunohistochemistry

Predicted cell location: Nucleus

Positive control: Human thyroid cancer

Recommended dilution: 25-100

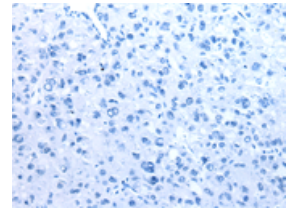
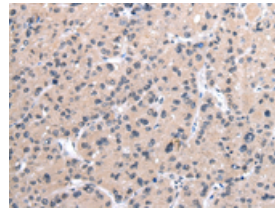


The image on the left is immunohistochemistry of paraffin-embedded Human thyroid cancer tissue using ml123592(MORC2 Antibody) at dilution 1/20, on the right is treated with fusion protein. (Original magnification: $\times 200$)

Predicted cell location: Nucleus

Positive control: Human liver cancer

Recommended dilution: 25-100



The image on the left is immunohistochemistry of paraffin-embedded Human liver cancer tissue using ml123592(MORC2 Antibody) at dilution 1/20, on the right is treated with fusion protein. (Original magnification: $\times 200$)

Western blotting

Predicted band size: 118 kDa

Positive control: A172, Hela, 293T and 231 cell lysates

Recommended dilution: 500-2000

Gel: 6% SDS-PAGE

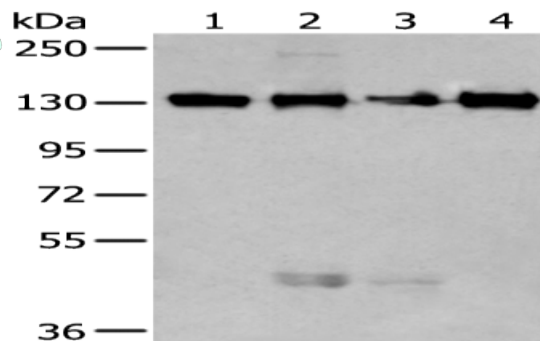
Lysate: 40 μ g

Lane 1-4: A172, Hela, 293T and 231 cell lysates

Primary antibody: ml123592(MORC2 Antibody) at dilution 1/250

Secondary antibody: Goat anti rabbit IgG at 1/8000 dilution

Exposure time: 20 seconds



ELISA

Recommended dilution: 5000-10000

联系电话: 4008-898-798, 021-61725725

联系QQ: 2881505695, 2881505696

邮箱: mlbio_cn@yeah.net

网址: www.mlbio.cn