

Anti-NDUFB11 antibody

Cat. No.	ml123630
Package	25 µl/100 µl/200 µl
Storage	-20°C, pH7.4 PBS, 0.05% NaN ₃ , 40% Glycerol

Product overview

Description	Anti-NDUFB11 rabbit polyclonal antibody
Applications	ELISA, WB, IHC
Immunogen	Full length fusion protein
Reactivity	Human, Mouse
Content	1.6 mg/ml
Host species	Rabbit
Ig class	Immunogen-specific rabbit IgG
Purification	Antigen affinity purification

Target information

Symbol	NDUFB11
Full name	NADH:ubiquinone oxidoreductase subunit B11
Synonyms	ESSS; Np15; P17.3; NP17.3; CI-ESSS; LSDMCA3
Swissprot	Q9NX14

Target Background

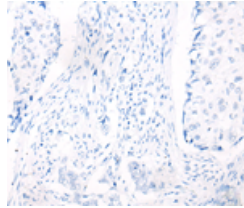
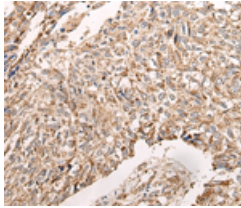
Complex 1 (also known as NADH dehydrogenase) of the electron transport chain (respiratory chain) is an enzymatic complex that catalyzes the transfer of electrons from NADH to ubiquinone. Free energy from the reaction is conserved in the transfer of protons into the intermembrane space to create an electrochemical proton gradient, a driving force for ATP synthesis. Complex 1 is a complicated, multi-protein, L-shaped complex composed of at least 45 different subunits and located in the mitochondrial inner membrane. NDUFB11 (NADH dehydrogenase (ubiquinone) 1 beta subcomplex subunit 11), also known as ESSS, Np15, Np17.3 (neuronal protein 17.3) or p17.3, is a hydrophobic transmembrane protein belonging to the Complex I NDUFB11 subunit family. Ubiquitously expressed, NDUFB11 localizes to the inner membrane of the mitochondrion and functions as an accessory subunit of Complex I. The cAMP-dependent phosphorylation of NDUFB11 is important for the regulation of Complex I activity.

订购热线: 4008-898-798

Applications

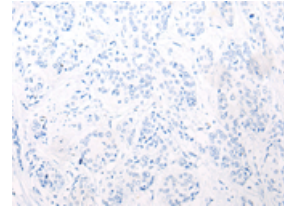
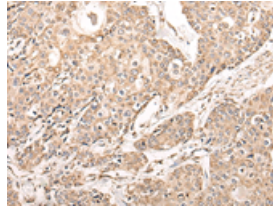
Immunohistochemistry

Predicted cell location: Cytoplasm
Positive control: Human lung cancer
Recommended dilution: 50-300



The image on the left is immunohistochemistry of paraffin-embedded Human lung cancer tissue using ml123630(NDUFB11 Antibody) at dilution 1/95, on the right is treated with fusion protein. (Original magnification: ×200)

Predicted cell location: Cytoplasm
Positive control: Human prostate cancer
Recommended dilution: 50-300



The image on the left is immunohistochemistry of paraffin-embedded Human prostate cancer tissue using ml123630(NDUFB11 Antibody) at dilution 1/95, on the right is treated with fusion protein. (Original magnification: ×200)

Western blotting

Predicted band size: 17 kDa
Positive control: Mouse brain tissue, Mouse liver tissue, 231 cell, K562 cell, A431 cell lysates
Recommended dilution: 1000-5000

Gel: 12%SDS-PAGE

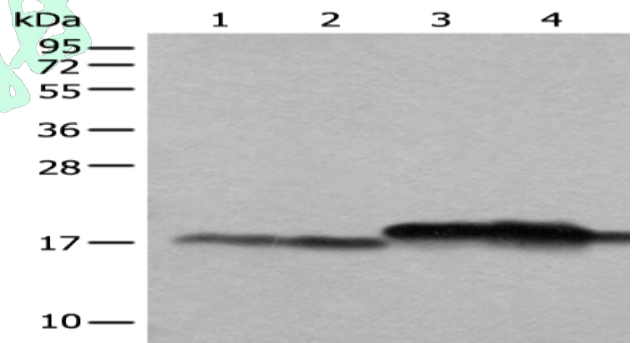
Lysate: 40 µg

Lane 1-5: Mouse brain tissue, Mouse liver tissue, 231 cell, K562 cell, A431 cell lysates

Primary antibody: ml123630(NDUFB11 Antibody) at dilution 1/1000

Secondary antibody: Goat anti rabbit IgG at 1/8000 dilution

Exposure time: 10 seconds



ELISA

Recommended dilution: 5000-10000

联系电话: 4008-898-798, 021-61725725

联系QQ: 2881505695, 2881505696

邮箱: mlbio_cn@yeah.net

网址: www.mlbio.cn