

Anti-NUDT22 antibody

Cat. No.	ml123792
Package	25 µl/100 µl/200 µl
Storage	-20°C, pH7.4 PBS, 0.05% NaN ₃ , 40% Glycerol

Product overview

Description	Anti-NUDT22 rabbit polyclonal antibody
Applications	ELISA, WB, IHC
Immunogen	Fusion protein of human NUDT22
Reactivity	Human, Mouse
Content	0.6 mg/ml
Host species	Rabbit
Ig class	Immunogen-specific rabbit IgG
Purification	Antigen affinity purification

Target information

Symbol	NUDT22
Full name	nudix (nucleoside diphosphate linked moiety X)-type motif 22
Synonyms	
Swissprot	Q9BRQ3

Target Background

NUDT22 (nudix (nucleoside diphosphate linked moiety X)-type motif 22) is a member of the Nudix hydrolase family of pyrophosphatases. Nudix hydrolases contain a characteristic Nudix domain and are responsible for catalyzing the hydrolysis of nucleoside diphosphate derivatives. NUDT22 is a 303 amino acid protein that lacks the nudix box, therefore lacking hydrolase activity. The gene encoding NUDT17 maps to human chromosome 11, which makes up around 4% of human genomic DNA and is considered a gene and disease association dense chromosome.

订购热线: 4008-898-798

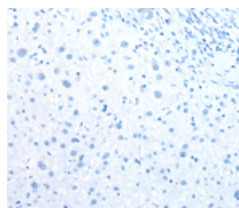
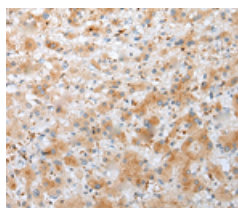
Applications

Immunohistochemistry

Predicted cell location: Cytoplasm

Positive control: Human liver cancer

Recommended dilution: 25-100

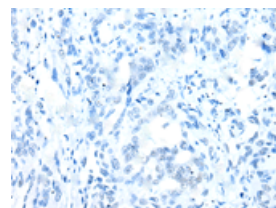
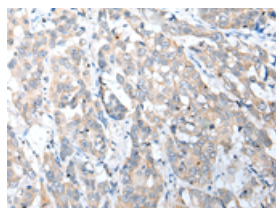


The image on the left is immunohistochemistry of paraffin-embedded Human liver cancer tissue using ml123792(NUDT22 Antibody) at dilution 1/25, on the right is treated with fusion protein. (Original magnification: $\times 200$)

Predicted cell location: Cytoplasm

Positive control: Human breast cancer

Recommended dilution: 25-100



The image on the left is immunohistochemistry of paraffin-embedded Human breast cancer tissue using ml123792(NUDT22 Antibody) at dilution 1/25, on the right is treated with fusion protein. (Original magnification: $\times 200$)

Western blotting

Predicted band size: 33 kDa

Positive control: A431, PC-3 and 231 cell, Human kidney tissue, 293T and Jurkat cell

Recommended dilution: 200-1000

Gel: 12% SDS-PAGE

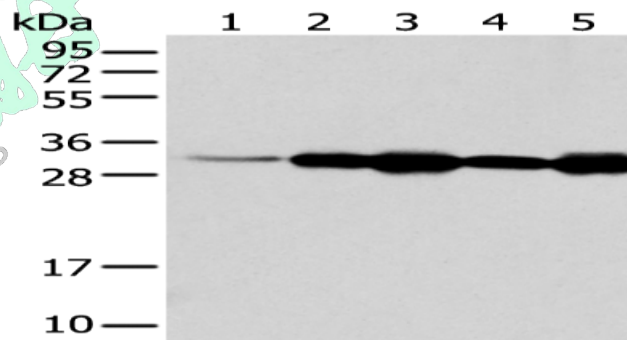
Lysate: 40 μ g

Lane 1-6: A431, PC-3 and 231 cell, Human kidney tissue, 293T and Jurkat cell

Primary antibody: ml123792(NUDT22 Antibody) at dilution 1/200

Secondary antibody: Goat anti rabbit IgG at 1/8000 dilution

Exposure time: 20 seconds



ELISA

Recommended dilution: 5000-10000

联系电话: 4008-898-798, 021-61725725

联系QQ: 2881505695, 2881505696

邮箱: mlbio_cn@yeah.net

网址: www.mlbio.cn