

Anti-C1qTNF3 antibody

Cat. No.	ml123823
Package	25 µl/100 µl/200 µl
Storage	-20°C, pH7.4 PBS, 0.05% NaN ₃ , 40% Glycerol

Product overview

Description	Anti-C1qTNF3 rabbit polyclonal antibody
Applications	ELISA, WB, IHC
Immunogen	Fusion protein of human C1qTNF3
Reactivity	Human, Mouse
Content	0.6 mg/ml
Host species	Rabbit
Ig class	Immunogen-specific rabbit IgG
Purification	Antigen affinity purification

Target information

Symbol	C1qTNF3
Full name	C1q and tumor necrosis factor related protein 3
Synonyms	CORS; CORCS; CTRP3; CORS26; C1ATNF3; CORS-26
Swissprot	Q9BXJ4

Target Background

C1qTNF3 (Complement C1q TNF-related protein 3/CTRP3; also CORS26 and cartonectin) is a 30-32 kDa, secreted member of the C1q and TNF-related protein (CTRP) superfamily of molecules. It is expressed by a wide variety of cells, including smooth muscle cells, fibroblasts, adipocytes, monocytes and proliferating chondrocytes. C1qTNF3 is an anti-inflammatory agent that apparently blocks LPS activation of mononuclear cells. It also has marked proliferative activity on diverse cell types such as vascular smooth muscle, chondrocytes, and endothelium. Finally, C1qTNF3 is known to act on hepatocytes and suppress hepatocyte gluconeogenesis. Mature human C1qTNF3 is 224 amino acids (aa) in length (aa 23-246). It possesses an N-terminal collagen-like domain (aa 51-113) followed by a C-terminal globular region (aa 113-246). C1qTNF3 is monomeric when intracellular, but forms a 90 kDa homotrimer plus higher-order oligomer when secreted. There are at least two potential isoform variants. One is 40-42 kDa, glycosylated, and contains a 73 aa insertion after Glu28, while a second shows concurrent deletions of aa 46-69 and 82-105. The longer 40 kDa isoform is reported to form heterotrimers and oligomers with the standard 30 kDa isoform. This has the effect of protecting the standard isoform from proteolysis. Over aa 24-246, human C1qTNF3 shares 99% aa sequence identity with mouse C1qTNF3.

订购热线: 4008-898-798

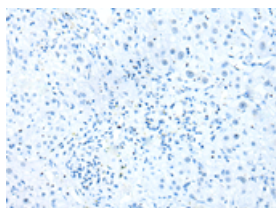
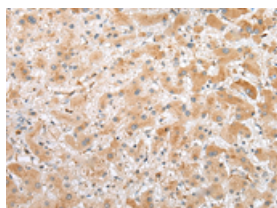
Applications

Immunohistochemistry

Predicted cell location: Secreted

Positive control: Human liver cancer

Recommended dilution: 25-100

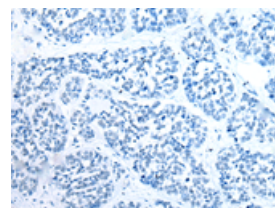
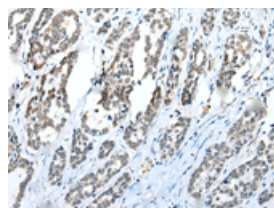


The image on the left is immunohistochemistry of paraffin-embedded Human liver cancer tissue using ml123823(C1QTNF3 Antibody) at dilution 1/25, on the right is treated with fusion protein. (Original magnification: $\times 200$)

Predicted cell location: Secreted

Positive control: Human esophagus cancer

Recommended dilution: 25-100



The image on the left is immunohistochemistry of paraffin-embedded Human esophagus cancer tissue using ml123823(C1QTNF3 Antibody) at dilution 1/25, on the right is treated with fusion protein. (Original magnification: $\times 200$)

Western blotting

Predicted band size: 27 kDa

Positive control: Human colorectal cancer tissue

Recommended dilution: 200-1000

Gel: 12% SDS-PAGE

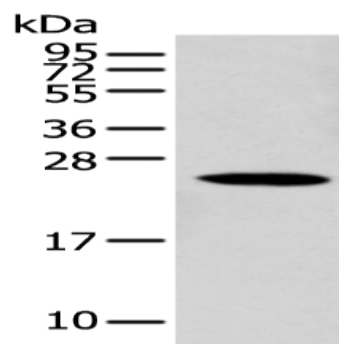
Lysate: 40 μ g

Lane: Human colorectal cancer tissue

Primary antibody: ml123823(C1QTNF3 Antibody) at dilution 1/200

Secondary antibody: Goat anti rabbit IgG at 1/8000 dilution

Exposure time: 20 seconds



ELISA

Recommended dilution: 5000-10000

联系电话: 4008-898-798, 021-61725725

联系QQ: 2881505695, 2881505696

邮箱: mlbio_cn@yeah.net

网址: www.mlbio.cn