

Anti-FAM3D antibody

Cat. No.	ml123906
Package	25 µl/100 µl/200 µl
Storage	-20°C, pH7.4 PBS, 0.05% NaN ₃ , 40% Glycerol

Product overview

Description	Anti-FAM3D rabbit polyclonal antibody
Applications	ELISA, WB, IHC
Immunogen	Fusion protein of human FAM3D
Reactivity	Human
Content	0.9 mg/ml
Host species	Rabbit
Ig class	Immunogen-specific rabbit IgG
Purification	Antigen affinity purification

Target information

Symbol	FAM3D
Full name	family with sequence similarity 3, member D
Synonyms	EF7; OIT1
Swissprot	Q96BQ1

Target Background

FAM3D, also known as EF-7, belongs to the novel cytokine-like family whose members are secreted four-helix bundle proteins. Human FAM3D is abundantly expressed in placenta as a 224 amino acid (aa) residue precursor with a 25 aa signal sequence. The function of this protein remains unknown.

订购热线: 4008-898-798

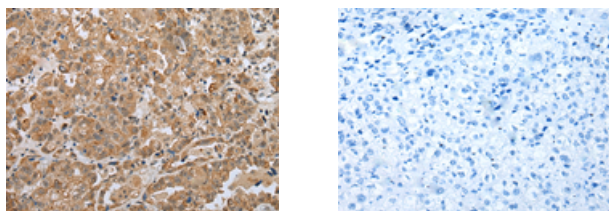
Applications

Immunohistochemistry

Predicted cell location: Secreted

Positive control: Human ovarian cancer

Recommended dilution: 25-100



The image on the left is immunohistochemistry of paraffin-embedded Human ovarian cancer tissue using ml123906(FAM3D Antibody) at dilution 1/30, on the right is treated with fusion protein. (Original magnification: $\times 200$)

Western blotting

Predicted band size: 25 kDa

Positive control: HT-29 and HUVEC cell

Recommended dilution: 200-1000

Gel: 12% SDS-PAGE

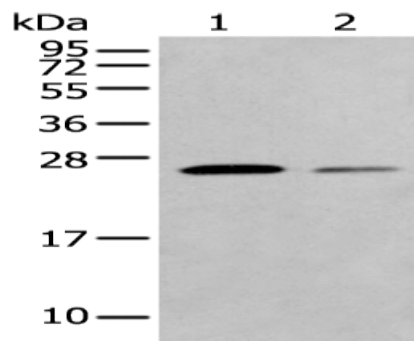
Lysate: 40 μ g

Lane 1-2: HT-29 and HUVEC cell

Primary antibody: ml123906(FAM3D Antibody) at dilution 1/400

Secondary antibody: Goat anti rabbit IgG at 1/8000 dilution

Exposure time: 15 seconds



ELISA

Recommended dilution: 5000-10000

联系电话: 4008-898-798, 021-61725725

联系QQ: 2881505695, 2881505696

邮箱: mlbio_cn@yeah.net

网址: www.mlbio.cn