

Anti-ATP6V1E2 antibody

Cat. No.	ml123909
Package	25 µl/100 µl/200 µl
Storage	-20°C, pH7.4 PBS, 0.05% NaN ₃ , 40% Glycerol

Product overview

Description	Anti-ATP6V1E2 rabbit polyclonal antibody
Applications	ELISA, WB, IHC
Immunogen	Full length fusion protein
Reactivity	Human, Mouse
Content	0.5 mg/ml
Host species	Rabbit
Ig class	Immunogen-specific rabbit IgG
Purification	Antigen affinity purification

Target information

Symbol	ATP6V1E2
Full name	ATPase, H ⁺ transporting, lysosomal 31kDa, V1 subunit E2
Synonyms	VMA4; ATP6E1; ATP6EL2; ATP6V1EL2
Swissprot	Q96A05

Target Background

Subunit of the peripheral V1-complex of vacuolar ATPase essential for assembly or catalytic function. V-ATPase is responsible for acidifying a variety of intracellular compartments in eukaryotic cells. This isoform is essential for energy coupling involved in acidification of acrosome.

订购热线: 4008-898-798

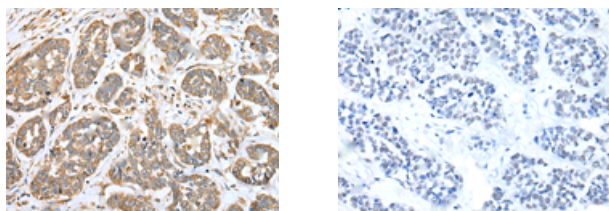
Applications

Immunohistochemistry

Predicted cell location: Cytoplasm

Positive control: Human esophagus cancer

Recommended dilution: 25-100



The image on the left is immunohistochemistry of paraffin-embedded Human esophagus cancer tissue using ml123909(ATP6V1E2 Antibody) at dilution 1/25, on the right is treated with fusion protein. (Original magnification: ×200)

Western blotting

Predicted band size: 26 kDa

Positive control: Mouse brain tissue and TM4 cell

Recommended dilution: 200-1000

Gel: 12% SDS-PAGE

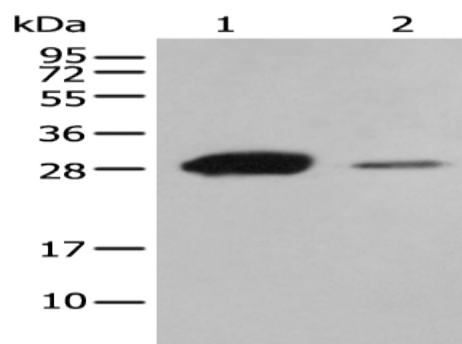
Lysate: 40 µg

Lane 1-2: Mouse brain tissue and TM4 cell

Primary antibody: ml123909(ATP6V1E2 Antibody) at dilution 1/200

Secondary antibody: Goat anti rabbit IgG at 1/8000 dilution

Exposure time: 10 seconds



ELISA

Recommended dilution: 5000-10000

联系电话: 4008-898-798, 021-61725725

联系QQ: 2881505695, 2881505696

邮箱: mlbio_cn@yeah.net

网址: www.mlbio.cn