

Anti-NSMCE2 antibody

| | |
|-----------------|---|
| Cat. No. | ml123957 |
| Package | 25 µl/100 µl/200 µl |
| Storage | -20°C, pH7.4 PBS, 0.05% NaN ₃ , 40% Glycerol |

Product overview

| | |
|---------------------|--|
| Description | Anti-NSMCE2 rabbit polyclonal antibody |
| Applications | ELISA, WB, IHC |
| Immunogen | Full length fusion protein |
| Reactivity | Human, Mouse, Rat |
| Content | 0.8 mg/ml |
| Host species | Rabbit |
| Ig class | Immunogen-specific rabbit IgG |
| Purification | Antigen affinity purification |

Target information

| | |
|------------------|---|
| Symbol | NSMCE2 |
| Full name | NSE2/MMS21 homolog, SMC5-SMC6 complex SUMO ligase |
| Synonyms | NSE2; MMS21; ZMIZ7; C8orf36 |
| Swissprot | Q96MF7 |

Target Background

NSMCE2 is the E3 SUMO-protein ligase component of the SMC5-SMC6 complex, a complex involved in DNA double-strand breaks by homologous recombination. The complex may promote sister chromatid homologous recombination by recruiting the SMC1-SMC3 cohesin complex to double-strand breaks. NSMCE2 acts as a E3 ligase mediating SUMO attachment to various proteins such as SMC6L1 and TRAX, and maybe the cohesin components RAD21 and STAG2. SUMO protein-ligase activity is required for the prevention of DNA damage-induced apoptosis by facilitating DNA repair.

订购热线: 4008-898-798

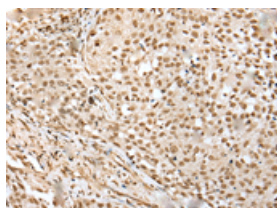
Applications

Immunohistochemistry

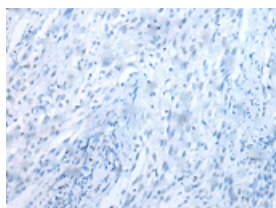
Predicted cell location: Nucleus

Positive control: Human lung cancer

Recommended dilution: 30-150



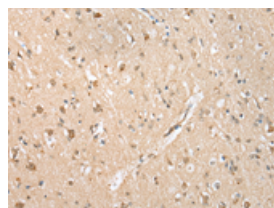
The image on the left is immunohistochemistry of paraffin-embedded Human lung cancer tissue using ml123957(NSMCE2 Antibody) at dilution 1/40, on the right is treated with fusion protein. (Original magnification: $\times 200$)



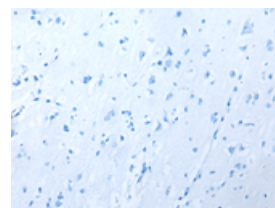
Predicted cell location: Nucleus

Positive control: Human brain

Recommended dilution: 30-150



The image on the left is immunohistochemistry of paraffin-embedded Human brain tissue using ml123957(NSMCE2 Antibody) at dilution 1/40, on the right is treated with fusion protein. (Original magnification: $\times 200$)



Western blotting

Predicted band size: 28 kDa

Positive control: 293T cell

Recommended dilution: 200-1000

Gel: 12% SDS-PAGE

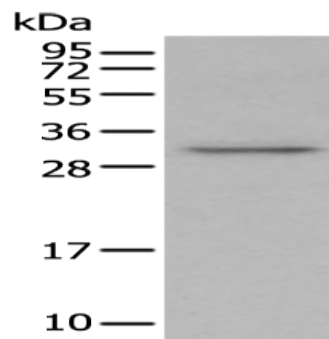
Lysate: 40 μ g

Lane: 293T cell

Primary antibody: ml123957(NSMCE2 Antibody) at dilution 1/400

Secondary antibody: Goat anti rabbit IgG at 1/8000 dilution

Exposure time: 30 seconds



ELISA

Recommended dilution: 5000-10000

联系电话: 4008-898-798, 021-61725725

联系QQ: 2881505695, 2881505696

邮箱: mlbio_cn@yeah.net

网址: www.mlbio.cn