

## Anti-VDAC1 antibody

<b>Cat. No.</b>	ml124100
<b>Package</b>	25 µl/100 µl/200 µl
<b>Storage</b>	-20°C, pH7.4 PBS, 0.05% NaN <sub>3</sub> , 40% Glycerol

### Product overview

<b>Description</b>	Anti-VDAC1 rabbit polyclonal antibody
<b>Applications</b>	ELISA, WB, IHC
<b>Immunogen</b>	Full length fusion protein
<b>Reactivity</b>	Human, Mouse, Rat
<b>Content</b>	0.6 mg/ml
<b>Host species</b>	Rabbit
<b>Ig class</b>	Immunogen-specific rabbit IgG
<b>Purification</b>	Antigen affinity purification

### Target information

<b>Symbol</b>	VDAC1
<b>Full name</b>	voltage-dependent anion channel 1
<b>Synonyms</b>	PORIN; VDAC-1
<b>Swissprot</b>	P21796

### Target Background

This gene encodes a voltage-dependent anion channel protein that is a major component of the outer mitochondrial membrane. The encoded protein facilitates the exchange of metabolites and ions across the outer mitochondrial membrane and may regulate mitochondrial functions. This protein also forms channels in the plasma membrane and may be involved in transmembrane electron transport. Alternate splicing results in multiple transcript variants. Multiple pseudogenes of this gene are found on chromosomes 1, 2 3, 6, 9, 12, X and Y.

订购热线: 4008-898-798

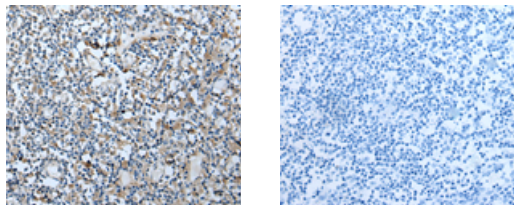
## Applications

### Immunohistochemistry

Predicted cell location: Cytoplasm and Cell membrane

Positive control: Human tonsil

Recommended dilution: 25-100



The image on the left is immunohistochemistry of paraffin-embedded Human tonsil tissue using ml124100(VDAC1 Antibody) at dilution 1/35, on the right is treated with fusion protein. (Original magnification:  $\times 200$ )

### Western blotting

Predicted band size: 31 kDa

Positive control: 293T, Hela, Jurkat and A431 cell, Human heart tissue, Mouse kidney tissue, HEPG2 cell lysates

Recommended dilution: 500-2000

Gel: 8% SDS-PAGE

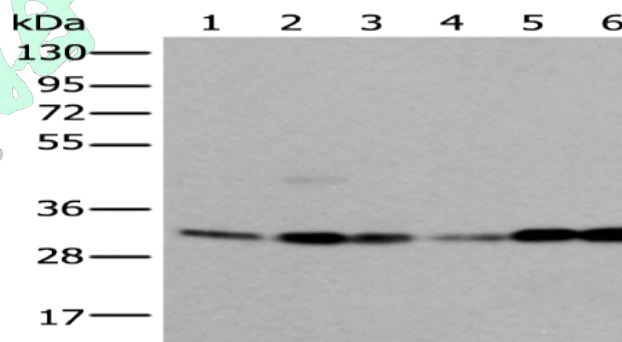
Lysate: 40  $\mu$ g

Lane 1-7: 293T, Hela, Jurkat and A431 cell, Human heart tissue, Mouse kidney tissue, HEPG2 cell lysates

Primary antibody: ml124100(VDAC1 Antibody) at dilution 1/350

Secondary antibody: Goat anti rabbit IgG at 1/8000 dilution

Exposure time: 3 seconds



### ELISA

Recommended dilution: 5000-10000

联系电话: 4008-898-798, 021-61725725

联系QQ: 2881505695, 2881505696

邮箱: [mlbio\\_cn@yeah.net](mailto:mlbio_cn@yeah.net)



订购热线: 4008-898-798

网址: [www.mlbio.cn](http://www.mlbio.cn)