

## Anti-U2AF2 antibody

<b>Cat. No.</b>	ml124125
<b>Package</b>	25 µl/100 µl/200 µl
<b>Storage</b>	-20°C, pH7.4 PBS, 0.05% NaN <sub>3</sub> , 40% Glycerol

### Product overview

<b>Description</b>	Anti-U2AF2 rabbit polyclonal antibody
<b>Applications</b>	ELISA, WB, IHC
<b>Immunogen</b>	Fusion protein of human U2AF2
<b>Reactivity</b>	Human, Mouse
<b>Content</b>	0.4 mg/ml
<b>Host species</b>	Rabbit
<b>Ig class</b>	Immunogen-specific rabbit IgG
<b>Purification</b>	Antigen affinity purification

### Target information

<b>Symbol</b>	U2AF2
<b>Full name</b>	U2 small nuclear RNA auxiliary factor 2
<b>Synonyms</b>	U2AF65
<b>Swissprot</b>	P26368

### Target Background

U2 auxiliary factor (U2AF), comprised of a large and a small subunit, is a non-snRNP protein required for the binding of U2 snRNP to the pre-mRNA branch site. This gene encodes the U2AF large subunit which contains a sequence-specific RNA-binding region with 3 RNA recognition motifs and an Arg/Ser-rich domain necessary for splicing. The large subunit binds to the polypyrimidine tract of introns early during spliceosome assembly. Multiple transcript variants have been detected for this gene, but the full-length nature of only two have been determined to date.

订购热线: 4008-898-798

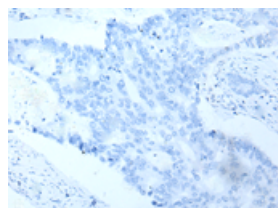
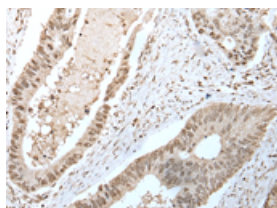
## Applications

### Immunohistochemistry

Predicted cell location: Nucleus

Positive control: Human colorectal cancer

Recommended dilution: 25-100

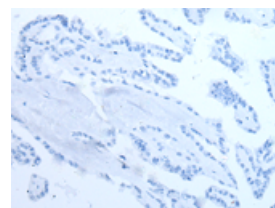
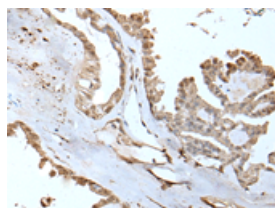


The image on the left is immunohistochemistry of paraffin-embedded Human colorectal cancer tissue using ml124125(U2AF2 Antibody) at dilution 1/30, on the right is treated with fusion protein. (Original magnification:  $\times 200$ )

Predicted cell location: Nucleus

Positive control: Human thyroid cancer

Recommended dilution: 25-100



The image on the left is immunohistochemistry of paraffin-embedded Human thyroid cancer tissue using ml124125(U2AF2 Antibody) at dilution 1/30, on the right is treated with fusion protein. (Original magnification:  $\times 200$ )

### Western blotting

Predicted band size: 54 kDa

Positive control: HEPG2, Hela, 293T cell lysates

Recommended dilution: 200-1000

Gel: 8%SDS-PAGE

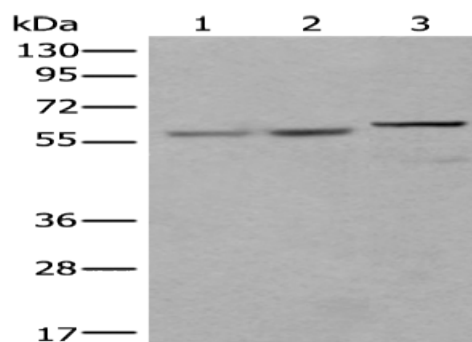
Lysate: 40  $\mu$ g

Lane 1-3: HEPG2, Hela, 293T cell lysates

Primary antibody: ml124125(U2AF2 Antibody) at dilution 1/250

Secondary antibody: Goat anti rabbit IgG at 1/8000 dilution

Exposure time: 1 minute



### ELISA

Recommended dilution: 5000-10000

联系电话: 4008-898-798, 021-61725725

联系QQ: 2881505695, 2881505696

邮箱: [mlbio\\_cn@yeah.net](mailto:mlbio_cn@yeah.net)

网址: [www.mlbio.cn](http://www.mlbio.cn)