

Anti-UQCRQ antibody

Cat. No.	ml124173
Package	25 µl/100 µl/200 µl
Storage	-20°C, pH7.4 PBS, 0.05% NaN ₃ , 40% Glycerol

Product overview

Description	Anti-UQCRQ rabbit polyclonal antibody
Applications	ELISA, WB, IHC
Immunogen	Full length fusion protein
Reactivity	Human, Rat
Content	0.8 mg/ml
Host species	Rabbit
Ig class	Immunogen-specific rabbit IgG
Purification	Antigen affinity purification

Target information

Symbol	UQCRQ
Full name	ubiquinol-cytochrome c reductase complex III subunit VII
Synonyms	QPC; QCR8; QP-C; UQCR7; MC3DN4
Swissprot	O14949

Target Background

This gene encodes a ubiquinone-binding protein of low molecular mass. This protein is a small core-associated protein and a subunit of ubiquinol-cytochrome c reductase complex III, which is part of the mitochondrial respiratory chain.

订购热线: 4008-898-798

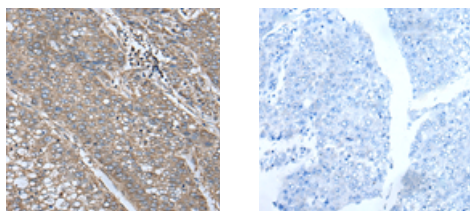
Applications

Immunohistochemistry

Predicted cell location: Cytoplasm

Positive control: Human liver cancer

Recommended dilution: 40-200



The image on the left is immunohistochemistry of paraffin-embedded Human liver cancer tissue using ml124173(UQCRQ Antibody) at dilution 1/50, on the right is treated with fusion protein.
(Original magnification: ×200)

Western blotting

Predicted band size: 10 kDa

Positive control: 293T, A549, Hela and 231 cell, Human placenta tissue, HEPG2 cell, Human fetal liver tissue lysates

Recommended dilution: 500-2000

Gel: 12%SDS-PAGE

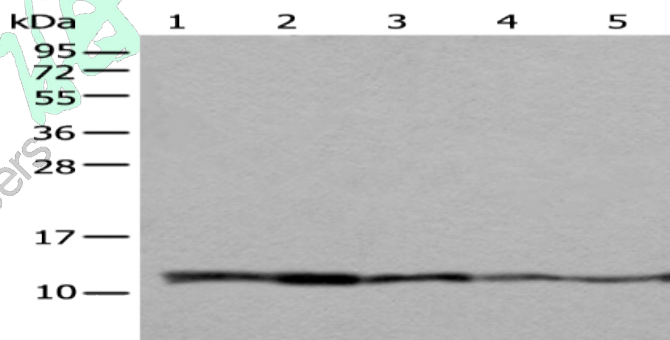
Lysate: 40 µg

Lane 1-7: 293T, A549, Hela and 231 cell, Human placenta tissue, HEPG2 cell, Human fetal liver tissue lysates

Primary antibody: ml124173(UQCRQ Antibody) at dilution 1/400

Secondary antibody: Goat anti rabbit IgG at 1/8000 dilution

Exposure time: 5 seconds



ELISA

Recommended dilution: 5000-10000

联系电话: 4008-898-798, 021-61725725

联系QQ: 2881505695, 2881505696

邮箱: mlbio_cn@yeah.net

网址: www.mlbio.cn