

Anti-ATAD1 antibody

Cat. No.	ml124201
Package	25 µl/100 µl/200 µl
Storage	-20°C, pH7.4 PBS, 0.05% NaN ₃ , 40% Glycerol

Product overview

Description	Anti-ATAD1 rabbit polyclonal antibody
Applications	ELISA, WB, IHC
Immunogen	Fusion protein of human ATAD1
Reactivity	Human, Mouse, Rat
Content	1 mg/ml
Host species	Rabbit
Ig class	Immunogen-specific rabbit IgG
Purification	Antigen affinity purification

Target information

Symbol	ATAD1
Full name	ATPase family, AAA domain containing 1
Synonyms	AFDC1; FNP001; THORASE
Swissprot	Q8NBU5

Target Background

ATPase that plays a critical role in regulating the surface expression of AMPA receptors (AMPA), thereby regulating synaptic plasticity and learning and memory. Required for NMDA-stimulated AMPAR internalization and inhibition of GRIA1 and GRIA2 recycling back to the plasma membrane; these activities are ATPase-dependent (By similarity).

订购热线: 4008-898-798

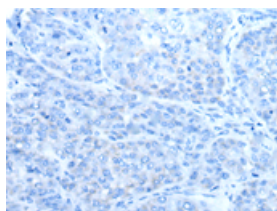
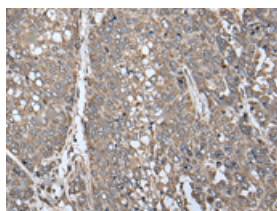
Applications

Immunohistochemistry

Predicted cell location: Cytoplasm or Nucleus

Positive control: Human liver cancer

Recommended dilution: 50-300

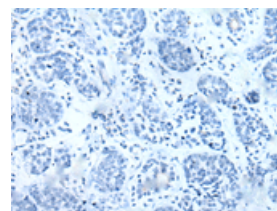
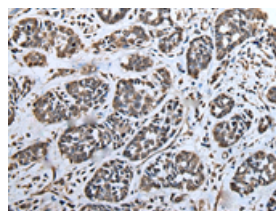


The image on the left is immunohistochemistry of paraffin-embedded Human liver cancer tissue using ml124201(ATAD1 Antibody) at dilution 1/65, on the right is treated with fusion protein. (Original magnification: $\times 200$)

Predicted cell location: Cytoplasm or Nucleus

Positive control: Human esophagus cancer

Recommended dilution: 50-300



The image on the left is immunohistochemistry of paraffin-embedded Human esophagus cancer tissue using ml124201(ATAD1 Antibody) at dilution 1/65, on the right is treated with fusion protein. (Original magnification: $\times 200$)

Western blotting

Predicted band size: 41 kDa

Positive control: Rat brain tissue, Mouse brain tissue and Human cerebrum tissue lysates

Recommended dilution: 500-2000

Gel: 8%SDS-PAGE

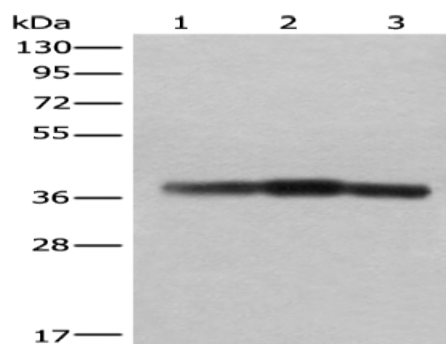
Lysate: 40 μ g

Lane 1-3: Rat brain tissue, Mouse brain tissue and Human cerebrum tissue lysates

Primary antibody: ml124201(ATAD1 Antibody) at dilution 1/800

Secondary antibody: Goat anti rabbit IgG at 1/8000 dilution

Exposure time: 60 seconds



ELISA

Recommended dilution: 5000-10000

联系电话: 4008-898-798, 021-61725725

联系QQ: 2881505695, 2881505696

邮箱: mlbio_cn@yeah.net

网址: www.mlbio.cn