

Anti-C12orf10 antibody

Cat. No.	ml124304
Package	25 µl/100 µl/200 µl
Storage	-20°C, pH7.4 PBS, 0.05% NaN ₃ , 40% Glycerol

Product overview

Description	Anti-C12orf10 rabbit polyclonal antibody
Applications	ELISA, WB, IHC
Immunogen	Fusion protein of human C12orf10
Reactivity	Human
Content	0.3 mg/ml
Host species	Rabbit
Ig class	Immunogen-specific rabbit IgG
Purification	Antigen affinity purification

Target information

Symbol	C12orf10
Full name	chromosome 12 open reading frame 10
Synonyms	MYG; MYG1; Gamm1; MST024; MSTP024
Swissprot	Q9HB07

Target Background

C12orf10, also known as MYG1, MYG1 is a 376 amino acid nucleo-mitochondrial protein belonging to the UPF0160 (MYG1) family. MYG1 is encoded by a gene that maps to human chromosome 12q13.13 and is ubiquitously expressed in simple as well as complex eukaryotes, with highest levels in testis. Considered to have a metal-dependent protein hydrolase (UPF0160) domain, MYG1 exhibits a mitochondrial targeting signal in the N-terminal region and a Pat7-type nuclear localization signal in the region between amino acids 33-39. Although MYG1 displays differential patterns and levels of expression during embryonic development, expression in normal adult tissues is stable, suggesting MYG1 involvement in early developmental processes and in adult stress/illness conditions. Elevation of MYG1 expression may be also associated with vitiligo susceptibility.

订购热线: 4008-898-798

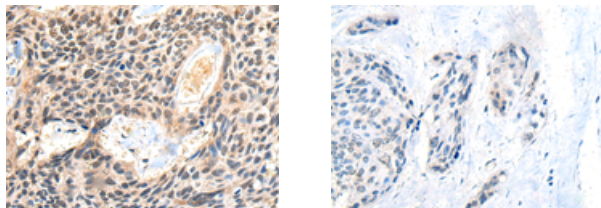
Applications

Immunohistochemistry

Predicted cell location: Nucleus and Cytoplasm

Positive control: Human esophagus cancer

Recommended dilution: 20-100



The image on the left is immunohistochemistry of paraffin-embedded Human esophagus cancer tissue using ml124304(C12orf10 Antibody) at dilution 1/25, on the right is treated with fusion protein. (Original magnification: $\times 200$)

Western blotting

Predicted band size: 42 kDa

Positive control: 293T, MCF-7 and PC-3 cell lysates

Recommended dilution: 200-1000

Gel: 8% SDS-PAGE

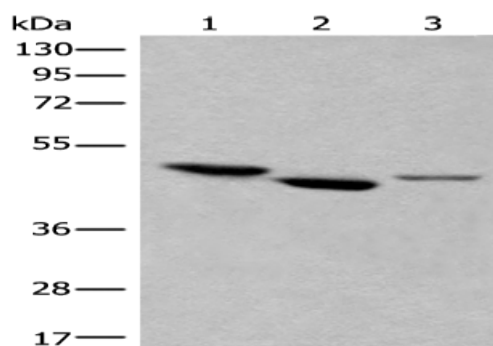
Lysate: 40 μ g

Lane 1-3: 293T, MCF-7 and PC-3 cell lysates

Primary antibody: ml124304(C12orf10 Antibody) at dilution 1/200

Secondary antibody: Goat anti rabbit IgG at 1/8000 dilution

Exposure time: 5 seconds



ELISA

Recommended dilution: 5000-10000

联系电话: 4008-898-798, 021-61725725

联系QQ: 2881505695, 2881505696

邮箱: mlbio_cn@yeah.net

网址: www.mlbio.cn