

Anti-SLC3A2 antibody

Cat. No.	ml124480
Package	25 µl/100 µl/200 µl
Storage	-20°C, pH7.4 PBS, 0.05% NaN ₃ , 40% Glycerol

Product overview

Description	Anti-SLC3A2 rabbit polyclonal antibody
Applications	ELISA, WB, IHC
Immunogen	Fusion protein of human SLC3A2
Reactivity	Human
Content	0.3 mg/ml
Host species	Rabbit
Ig class	Immunogen-specific rabbit IgG
Purification	Antigen affinity purification

Target information

Symbol	SLC3A2
Full name	solute carrier family 3 member 2
Synonyms	4F2; CD98; MDU1; 4F2HC; 4T2HC; NACAE; CD98HC
Swissprot	P08195

Target Background

This gene is a member of the solute carrier family and encodes a cell surface, transmembrane protein. The protein exists as the heavy chain of a heterodimer, covalently bound through di-sulfide bonds to one of several possible light chains. The encoded transporter plays a role in regulation of intracellular calcium levels and transports L-type amino acids. Alternatively spliced transcript variants, encoding different isoforms, have been characterized.

订购热线: 4008-898-798

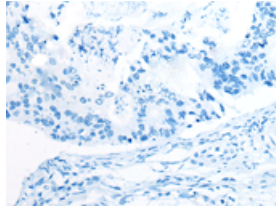
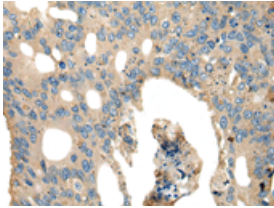
Applications

Immunohistochemistry

Predicted cell location: Cytoplasm

Positive control: Human colorectal cancer

Recommended dilution: 30-150

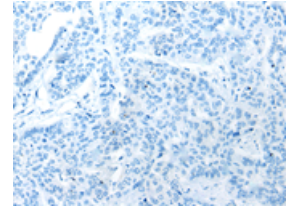
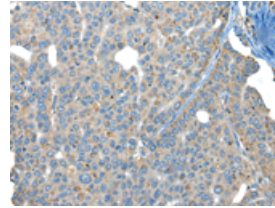


The image on the left is immunohistochemistry of paraffin-embedded Human colorectal cancer tissue using ml124480(SLC3A2 Antibody) at dilution 1/40, on the right is treated with fusion protein. (Original magnification: $\times 200$)

Predicted cell location: Cytoplasm

Positive control: Human liver cancer

Recommended dilution: 30-150



The image on the left is immunohistochemistry of paraffin-embedded Human liver cancer tissue using ml124480(SLC3A2 Antibody) at dilution 1/40, on the right is treated with fusion protein. (Original magnification: $\times 200$)

Western blotting

Predicted band size: 68 kDa

Positive control: A375 and Jurkat cell lysates

Recommended dilution: 500-2000

Gel: 8%SDS-PAGE

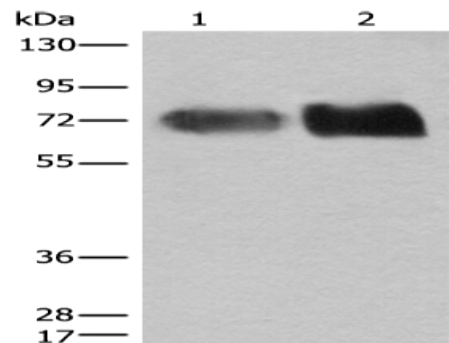
Lysate: 40 μ g

Lane 1-2: A375 and Jurkat cell lysates

Primary antibody: ml124480(SLC3A2 Antibody) at dilution 1/200

Secondary antibody: Goat anti rabbit IgG at 1/8000 dilution

Exposure time: 3 seconds



ELISA

Recommended dilution: 5000-10000

联系电话: 4008-898-798, 021-61725725

联系QQ: 2881505695, 2881505696

邮箱: mlbio_cn@yeah.net

网址: www.mlbio.cn