

## Anti-HSPA1A antibody

<b>Cat. No.</b>	ml120786
<b>Package</b>	25 µl/100 µl/200 µl
<b>Storage</b>	-20°C, pH7.4 PBS, 0.05% NaN <sub>3</sub> , 40% Glycerol

### Product overview

<b>Description</b>	Anti-HSPA1A rabbit polyclonal antibody
<b>Applications</b>	ELISA, IHC
<b>Immunogen</b>	Fusion protein of human HSPA1A
<b>Reactivity</b>	Human, Mouse, Rat
<b>Content</b>	0.3 mg/ml
<b>Host species</b>	Rabbit
<b>Ig class</b>	Immunogen-specific rabbit IgG
<b>Purification</b>	Antigen affinity purification

### Target information

<b>Symbol</b>	HSPA1A
<b>Full name</b>	heat shock 70kDa protein 1A
<b>Synonyms</b>	HSP72, HSPA1, HSP70I, HSP70-1, HSP70-1A
<b>Swissprot</b>	P0DMV8

### Target Background

This intronless gene encodes a 70kDa heat shock protein which is a member of the heat shock protein 70 family. In conjunction with other heat shock proteins, this protein stabilizes existing proteins against aggregation and mediates the folding of newly translated proteins in the cytosol and in organelles. It is also involved in the ubiquitin-proteasome pathway through interaction with the AU-rich element RNA-binding protein 1. The gene is located in the major histocompatibility complex class III region, in a cluster with two closely related genes which encode similar proteins.

订购热线: 4008-898-798

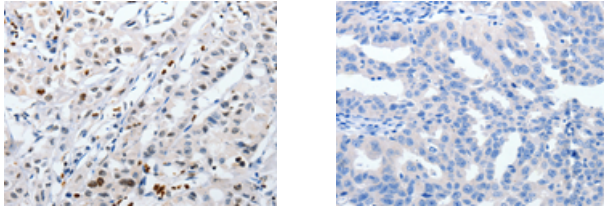
#### Applications

##### Immunohistochemistry

Predicted cell location: Cytoplasm, Nucleus

Positive control: Human lung cancer

Recommended dilution: 50-100



The image on the left is immunohistochemistry of paraffin-embedded Human lung cancer tissue using ml120786(HSPA1A Antibody) at dilution 1/60, on the right is treated with fusion protein. (Original magnification: ×200)

##### ELISA

Recommended dilution: 2000-5000

联系电话: 4008-898-798, 021-61725725

联系QQ: 2881505695, 2881505696

邮箱: [mlbio\\_cn@yeah.net](mailto:mlbio_cn@yeah.net)

网址: [www.mlbio.cn](http://www.mlbio.cn)