

## Anti-IGSF8 antibody

<b>Cat. No.</b>	ml120816
<b>Package</b>	25 µl/100 µl/200 µl
<b>Storage</b>	-20°C, pH7.4 PBS, 0.05% NaN <sub>3</sub> , 40% Glycerol

### Product overview

<b>Description</b>	Anti-IGSF8 rabbit polyclonal antibody
<b>Applications</b>	ELISA, IHC
<b>Immunogen</b>	Fusion protein of human IGSF8
<b>Reactivity</b>	Human, Mouse
<b>Content</b>	0.2 mg/ml
<b>Host species</b>	Rabbit
<b>Ig class</b>	Immunogen-specific rabbit IgG
<b>Purification</b>	Antigen affinity purification

### Target information

<b>Symbol</b>	IGSF8
<b>Full name</b>	immunoglobulin superfamily, member 8
<b>Synonyms</b>	EWI2; PGRL; CD316; EWI-2; KCT-4; CD81P3; LIR-D1
<b>Swissprot</b>	Q969P0

### Target Background

This gene encodes a member the EWI subfamily of the immunoglobulin protein superfamily. Members of this family contain a single transmembrane domain, an EWI (Glu-Trp-Ile)-motif and a variable number of immunoglobulin domains. This protein interacts with the tetraspanins CD81 and CD9 and may regulate their role in certain cellular functions including cell migration and viral infection. The encoded protein may also function as a tumor suppressor by inhibiting the proliferation of certain cancers. Alternate splicing results in multiple transcript variants that encode the same protein.

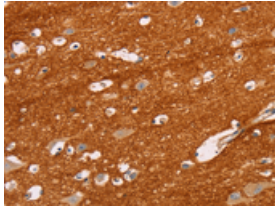
## Applications

### Immunohistochemistry

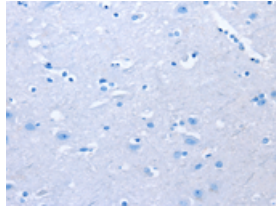
Predicted cell location: Cytoplasm

Positive control: Human brain

Recommended dilution: 25-100



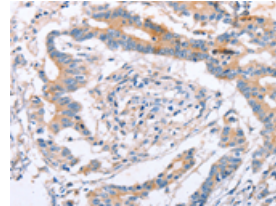
The image on the left is immunohistochemistry of paraffin-embedded Human brain tissue using ml120816(IGSF8 Antibody) at dilution 1/15, on the right is treated with fusion protein. (Original magnification:  $\times 200$ )



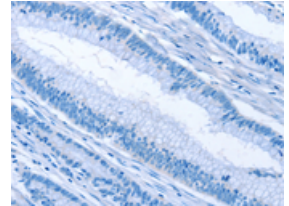
Predicted cell location: Cytoplasm

Positive control: Human colon cancer

Recommended dilution: 25-100



The image on the left is immunohistochemistry of paraffin-embedded Human colon cancer tissue using ml120816(IGSF8 Antibody) at dilution 1/15, on the right is treated with fusion protein. (Original magnification:  $\times 200$ )



### ELISA

Recommended dilution: 2000-5000

联系电话: 4008-898-798, 021-61725725

联系QQ: 2881505695, 2881505696

邮箱: [mlbio\\_cn@yeah.net](mailto:mlbio_cn@yeah.net)

网址: [www.mlbio.cn](http://www.mlbio.cn)