

Anti-MUC20 antibody

Cat. No.	ml121008
Package	25 µl/100 µl/200 µl
Storage	-20°C, pH7.4 PBS, 0.05% NaN ₃ , 40% Glycerol

Product overview

Description	Anti-MUC20 rabbit polyclonal antibody
Applications	ELISA, IHC
Immunogen	Fusion protein of human MUC20
Reactivity	Human
Content	0.2 mg/ml
Host species	Rabbit
Ig class	Immunogen-specific rabbit IgG
Purification	Antigen affinity purification

Target information

Symbol	MUC20
Full name	mucin 20, cell surface associated
Synonyms	MUC-20
Swissprot	Q8N307

Target Background

This gene encodes a member of the mucin protein family. Mucins are high molecular weight glycoproteins secreted by many epithelial tissues to form an insoluble mucous barrier. The shorter isoform expressed by this gene is localized to the plasma membrane, whereas the longer isoform might be secreted. The C terminus of this protein associates with the multifunctional docking site of the met proto-oncogene and suppresses activation of some downstream met signaling cascades. The protein features a tandem repeat domain that varies between 2 and 6 copies in most individuals. The allele represented in the human reference assembly contains 12 copies. Multiple transcript variants encoding different isoforms have been found for this gene.

订购热线: 4008-898-798

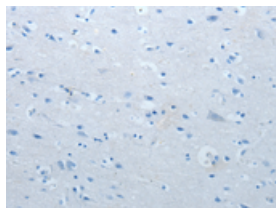
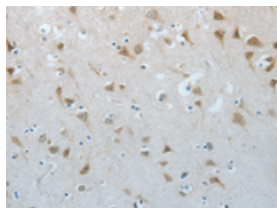
Applications

Immunohistochemistry

Predicted cell location: Cytoplasm, Cell projection

Positive control: Human brain

Recommended dilution: 25-100

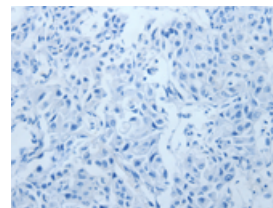
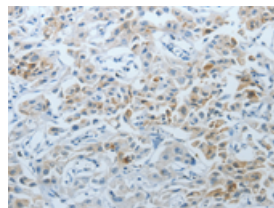


The image on the left is immunohistochemistry of paraffin-embedded Human brain tissue using ml121008(MUC20 Antibody) at dilution 1/20, on the right is treated with fusion protein. (Original magnification: $\times 200$)

Predicted cell location: Cytoplasm, Cell projection

Positive control: Human lung cancer

Recommended dilution: 25-100



The image on the left is immunohistochemistry of paraffin-embedded Human lung cancer tissue using ml121008(MUC20 Antibody) at dilution 1/20, on the right is treated with fusion protein. (Original magnification: $\times 200$)

ELISA

Recommended dilution: 1000-5000

联系电话: 4008-898-798, 021-61725725

联系QQ: 2881505695, 2881505696

邮箱: mlbio_cn@yeah.net

网址: www.mlbio.cn