

## Anti-MPZ antibody

<b>Cat. No.</b>	ml121010
<b>Package</b>	25 µl/100 µl/200 µl
<b>Storage</b>	-20°C, pH7.4 PBS, 0.05% NaN <sub>3</sub> , 40% Glycerol

### Product overview

<b>Description</b>	Anti-MPZ rabbit polyclonal antibody
<b>Applications</b>	ELISA, IHC
<b>Immunogen</b>	Fusion protein of human MPZ
<b>Reactivity</b>	Human, Mouse, Rat
<b>Content</b>	0.2 mg/ml
<b>Host species</b>	Rabbit
<b>Ig class</b>	Immunogen-specific rabbit IgG
<b>Purification</b>	Antigen affinity purification

### Target information

<b>Symbol</b>	MPZ
<b>Full name</b>	myelin protein zero
<b>Synonyms</b>	P0; CHM; DSS; MPP; CMT1; CMT1B; CMT2I; CMT2J; CMT4E; CMTDI3; CMTDID; HMSNIB
<b>Swissprot</b>	P25189

### Target Background

This gene encodes a major structural protein of peripheral myelin. Mutations in this gene result in the autosomal dominant form of Charcot-Marie-Tooth disease type 1 and other polyneuropathies. The myelin sheath is a multi-layered membrane, unique to the nervous system, that functions as an insulator to greatly increase the velocity of axonal impulse conduction. The P0 glycoprotein, absent in the central nervous system,[1] is a major component of the myelin sheath in peripheral nerves. It comprises a large extracellular N-terminal domain, a single transmembrane (TM) region, and a smaller positively charged intracellular domain.

订购热线: 4008-898-798

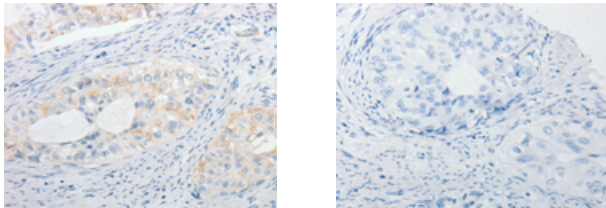
#### Applications

##### Immunohistochemistry

Predicted cell location: Cell membrane, Cytoplasm

Positive control: Human cervical cancer

Recommended dilution: 5-20



The image on the left is immunohistochemistry of paraffin-embedded Human cervical cancer tissue using ml121010(MPZ Antibody) at dilution 1/15, on the right is treated with fusion protein. (Original magnification: ×200)

##### ELISA

Recommended dilution: 1000-2000

联系电话: 4008-898-798, 021-61725725

联系QQ: 2881505695, 2881505696

邮箱: [mlbio\\_cn@yeah.net](mailto:mlbio_cn@yeah.net)

网址: [www.mlbio.cn](http://www.mlbio.cn)