

Anti-NME5 antibody

Cat. No.	ml121044
Package	25 µl/100 µl/200 µl
Storage	-20°C, pH7.4 PBS, 0.05% NaN ₃ , 40% Glycerol

Product overview

Description	Anti-NME5 rabbit polyclonal antibody
Applications	ELISA, IHC
Immunogen	Fusion protein of human NME5
Reactivity	Human, Mouse
Content	0.8 mg/ml
Host species	Rabbit
Ig class	Immunogen-specific rabbit IgG
Purification	Antigen affinity purification

Target information

Symbol	NME5
Full name	NME/NM23 family member 5
Synonyms	NM23H5; RSPH23; NM23-H5
Swissprot	P56597

Target Background

The NME5 gene encodes a 212-amino acid polypeptide with homology to the NDP kinases. Northern blot analysis detected abundant expression of a 1.1-kb mRNA in testis. In situ hybridization to testis revealed NME5 mRNA in the seminiferous tubules in a pattern consistent with stage-specific expression in germinal cells during spermatogenesis.

订购热线: 4008-898-798

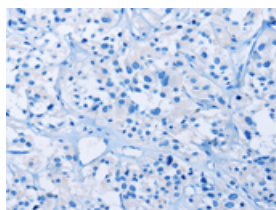
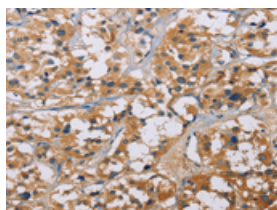
Applications

Immunohistochemistry

Predicted cell location: Cytoplasm

Positive control: Human thyroid cancer

Recommended dilution: 50-200

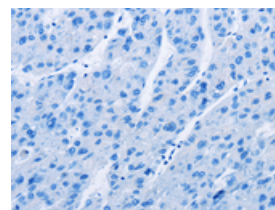
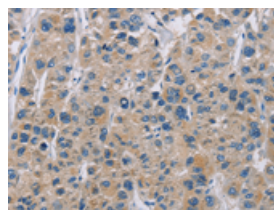


The image on the left is immunohistochemistry of paraffin-embedded Human thyroid cancer tissue using ml121044(NME5 Antibody) at dilution 1/50, on the right is treated with fusion protein. (Original magnification: $\times 200$)

Predicted cell location: Cytoplasm

Positive control: Human liver cancer

Recommended dilution: 50-200



The image on the left is immunohistochemistry of paraffin-embedded Human liver cancer tissue using ml121044(NME5 Antibody) at dilution 1/50, on the right is treated with fusion protein. (Original magnification: $\times 200$)

ELISA

Recommended dilution: 2000-5000

联系电话: 4008-898-798, 021-61725725

联系QQ: 2881505695, 2881505696

邮箱: mlbio_cn@yeah.net

网址: www.mlbio.cn