

Anti-FAM3A antibody

Cat. No.	ml121099
Package	25 µl/100 µl/200 µl
Storage	-20°C, pH7.4 PBS, 0.05% NaN ₃ , 40% Glycerol

Product overview

Description	Anti-FAM3A rabbit polyclonal antibody
Applications	ELISA, IHC
Immunogen	Fusion protein of human FAM3A
Reactivity	Human, Mouse
Content	0.3 mg/ml
Host species	Rabbit
Ig class	Immunogen-specific rabbit IgG
Purification	Antigen affinity purification

Target information

Symbol	FAM3A
Full name	family with sequence similarity 3, member A
Synonyms	DLD, 2.19, XAP-7, DXS560S
Swissprot	P98173

Target Background

This gene belongs to the FAM3 family. It may act as a defensin against invading fungal microorganisms. Mostly expression in testis, pancreas, adrenal, placenta, brain, fetal brain, liver, kidney, skeletal muscle and heart.

订购热线: 4008-898-798

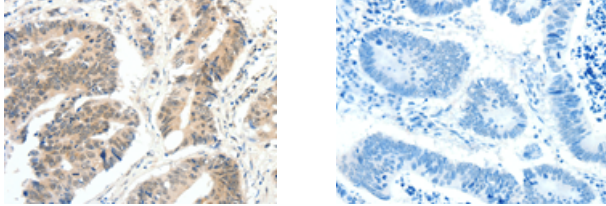
Applications

Immunohistochemistry

Predicted cell location: Cytoplasm, Nucleus

Positive control: Human colon cancer

Recommended dilution: 25-100



The image on the left is immunohistochemistry of paraffin-embedded Human colon cancer tissue using ml121099(FAM3A Antibody) at dilution 1/30, on the right is treated with fusion protein. (Original magnification: $\times 200$)

ELISA

Recommended dilution: 1000-5000

联系电话: 4008-898-798, 021-61725725

联系QQ: 2881505695, 2881505696

邮箱: mlbio_cn@yeah.net

网址: www.mlbio.cn