

Anti-RPAP3 antibody

Cat. No.	ml121255
Package	25 µl/100 µl/200 µl
Storage	-20°C, pH7.4 PBS, 0.05% NaN ₃ , 40% Glycerol

Product overview

Description	Anti-RPAP3 rabbit polyclonal antibody
Applications	ELISA, IHC
Immunogen	Fusion protein of human RPAP3
Reactivity	Human
Content	0.2 mg/ml
Host species	Rabbit
Ig class	Immunogen-specific rabbit IgG
Purification	Antigen affinity purification

Target information

Symbol	RPAP3
Full name	RNA polymerase II associated protein 3
Synonyms	
Swissprot	Q9H6T3

Target Background

This gene encodes an RNA polymerase II-associated protein. The encoded protein may function in transcriptional regulation and may also regulate apoptosis. Alternatively spliced transcript variants have been described. Forms an interface between the RNA polymerase II enzyme and chaperone/scaffolding protein, suggesting that it is required to connect RNA polymerase II to regulators of protein complex formation.

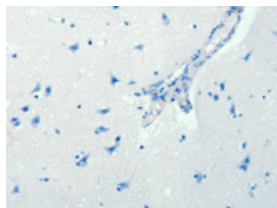
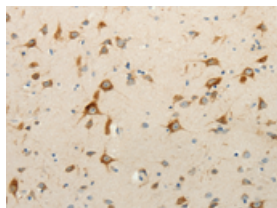
Applications

Immunohistochemistry

Predicted cell location: Cytoplasm

Positive control: Human brain

Recommended dilution: 15-50

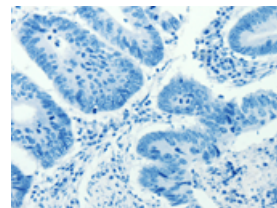
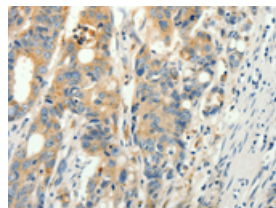


The image on the left is immunohistochemistry of paraffin-embedded Human brain tissue using ml121255(RPAP3 Antibody) at dilution 1/15, on the right is treated with fusion protein. (Original magnification: $\times 200$)

Predicted cell location: Cytoplasm

Positive control: Human colon cancer

Recommended dilution: 15-50



The image on the left is immunohistochemistry of paraffin-embedded Human colon cancer tissue using ml121255(RPAP3 Antibody) at dilution 1/15, on the right is treated with fusion protein. (Original magnification: $\times 200$)

ELISA

Recommended dilution: 1000-2000

联系电话: 4008-898-798, 021-61725725

联系QQ: 2881505695, 2881505696

邮箱: mlbio_cn@yeah.net

网址: www.mlbio.cn