

## Anti-6×His antibody

<b>Cat. No.</b>	ml110002
<b>Package</b>	25 µl/100 µl/200 µl
<b>Storage</b>	-20°C, pH7.4 PBS, 0.05% NaN <sub>3</sub> , 40% Glycerol

### Product overview

<b>Description</b>	Anti-6×His rabbit polyclonal antibody
<b>Applications</b>	ELISA, WB
<b>Immunogen</b>	Synthetic peptide: 18×His conjugated to KLH
<b>Reactivity</b>	Fusion proteins containing the HIS Tag
<b>Content</b>	0.6 mg/ml
<b>Host species</b>	Rabbit
<b>Ig class</b>	Immunogen-specific rabbit IgG
<b>Purification</b>	Antigen affinity purification

### Target information

<b>Symbol</b>	6×His
<b>Full name</b>	HHHHHH Tag
<b>Synonyms</b>	6 His epitope tag
<b>Swissprot</b>	

### Target Background

The 6 X histidine motif is used as a tag on many recombinant proteins to facilitate purification. It can then be purified using immobilized metal ions, traditionally nickel, in a procedure termed immobilized-metal affinity chromatography. Further analysis of the protein can be achieved using an antibody specific to the 6 X histidine in techniques such as western blotting. The antibody recognizes the His-tag fused to targeted proteins in transfected or transformed cells.

订购热线: 4008-898-798

## Applications

### Western blotting

Predicted band size: 48 kDa

Positive control: Two fusion proteins containing the HIS Tag

Recommended dilution: 1000-5000

Gel: 8%SDS-PAGE

Lysate: 40  $\mu$ g

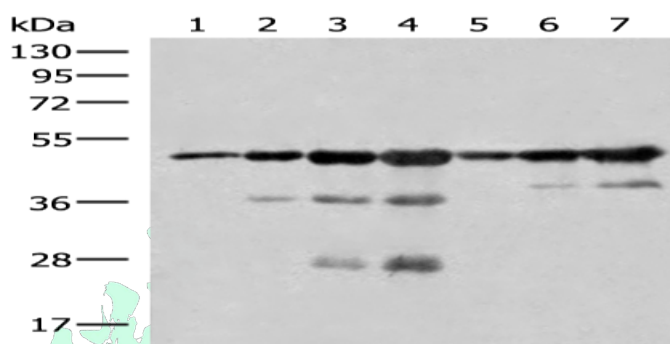
Lane 1-7: lane 1-4 are 0.1  $\mu$ g, 0.25  $\mu$ g, 0.5  $\mu$ g, 1  $\mu$ g

Recombinant 6 $\times$ HIS Tagged protein A, lane 5-7 are 0.1  $\mu$ g, 0.25  $\mu$ g, 0.5  $\mu$ g Recombinant 6 $\times$ HIS Tagged protein B

Primary antibody: ml110002(6 $\times$ His Antibody) at dilution 1/1000

Secondary antibody: Goat anti rabbit IgG at 1/8000 dilution

Exposure time: 30 seconds



### ELISA

Recommended dilution: 5000-10000

联系电话: 4008-898-798, 021-61725725

联系QQ: 2881505695, 2881505696

邮箱: [mlbio\\_cn@yeah.net](mailto:mlbio_cn@yeah.net)

网址: [www.mlbio.cn](http://www.mlbio.cn)

**mlbio** 酶联生物  
Good elisakit producers  
订购热线: 4008-898-798