

## Anti-HA Tag antibody

<b>Cat. No.</b>	ml110004
<b>Package</b>	25 µl/100 µl/200 µl
<b>Storage</b>	-20°C, pH7.4 PBS, 0.05% NaN <sub>3</sub> , 40% Glycerol

### Product overview

<b>Description</b>	Anti-HA Tag rabbit polyclonal antibody
<b>Applications</b>	ELISA, WB
<b>Immunogen</b>	Synthetic peptide: YPYDVPDYA conjugated to KLH.
<b>Reactivity</b>	
<b>Content</b>	0.78 mg/ml
<b>Host species</b>	Rabbit
<b>Ig class</b>	Immunogen-specific rabbit IgG
<b>Purification</b>	Antigen affinity purification

### Target information

<b>Symbol</b>	HA Tag
<b>Full name</b>	Human influenza hemagglutinin Tag
<b>Synonyms</b>	HA epitope tag, Hemagglutinin Tag
<b>Swissprot</b>	

### Target Background

Human influenza hemagglutinin (HA) is a surface glycoprotein required for the infectivity of the human virus. The HA tag is derived from the HA-molecule corresponding to amino acids 98-106 has been extensively used as a general epitope tag in expression vectors. Many recombinant proteins have been engineered to express the HA tag, which does not appear to interfere with the bioactivity or the biodistribution of the recombinant protein. This tag facilitates the detection, isolation, and purification of the proteins.

订购热线: 4008-898-798

#### Applications

##### Western blotting

Predicted band size: 300 kDa

Positive control: 293T cells transfected with HA-tagged protein

Recommended dilution: 500-2000

Gel: 6%SDS-PAGE

Lysate: 40 µg

Lane: 293T cells transfected with HA-tagged protein

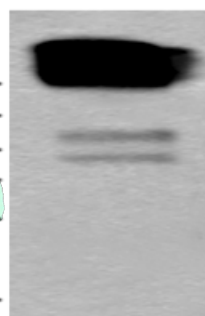
Primary antibody: ml110004(HA Tag Antibody) at dilution 1/550

Secondary antibody: Goat anti rabbit IgG at 1/8000 dilution

Exposure time: 3 seconds

kDa

250 —  
130 —  
95 —  
72 —  
55 —  
36 —



##### ELISA

Recommended dilution: 5000-10000

联系电话: 4008-898-798, 021-61725725

联系QQ: 2881505695, 2881505696

邮箱: [mlbio\\_cn@yeah.net](mailto:mlbio_cn@yeah.net)

网址: [www.mlbio.cn](http://www.mlbio.cn)