

Anti-ACTIN antibody

Cat. No.	ml110007
Package	25 µl/100 µl/200 µl
Storage	-20°C, pH7.4 PBS, 0.05% NaN ₃ , 40% Glycerol

Product overview

Description	Anti-ACTIN rabbit polyclonal antibody
Applications	ELISA, WB
Immunogen	Synthetic peptide of Arabidopsis thaliana actin
Reactivity	Plants
Content	0.8 mg/ml
Host species	Rabbit
Ig class	Immunogen-specific rabbit IgG
Purification	Antigen affinity purification

Target information

Symbol	ACTIN
Full name	Actin
Synonyms	
Swissprot	P53497

Target Background

Member of actin subclass composed of ACT12 and ACT4. RNA is expressed at very low levels in vegetative organs, low levels in flowers and very high levels in pollen. Expression of an ACT12/GUS fusion was found in vascular tissues, tapetum, developing and mature pollen, the root cap and in a ring of pericycle tissues during lateral root initiation and early development.

订购热线: 4008-898-798

Applications

Western blotting

Predicted band size: 42 kDa

Positive control: Arabidopsis protein lysate, Soy protein lysate, Corn protein lysates

Recommended dilution: 1000-5000

Gel: 8%SDS-PAGE

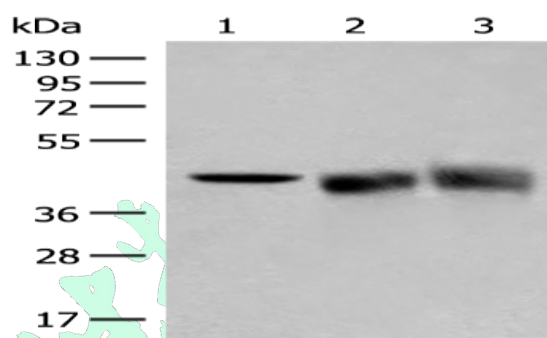
Lysate: 40 µg

Lane 1-3: Arabidopsis protein lysate, Soy protein lysate, Corn protein lysates

Primary antibody: ml110007(ACTIN Antibody) at dilution 1/200

Secondary antibody: Goat anti rabbit IgG at 1/8000 dilution

Exposure time: 3 seconds



ELISA

Recommended dilution: 5000-10000

联系电话: 4008-898-798, 021-61725725

联系QQ: 2881505695, 2881505696

邮箱: mlbio_cn@yeah.net

网址: www.mlbio.cn