

Anti-GFP antibody

Cat. No.	ml110008
Package	25 µl/100 µl/200 µl
Storage	-20°C, pH7.4 PBS, 0.05% NaN ₃ , 40% Glycerol

Product overview

Description	Anti-GFP rabbit polyclonal antibody
Applications	ELISA, WB
Immunogen	Fusion protein of Aequorea victoria GFP
Reactivity	GFP transfected cells or Pure GFP protein
Content	1.4 mg/ml
Host species	Rabbit
Ig class	Immunogen-specific rabbit IgG
Purification	Antigen affinity purification

Target information

Symbol	GFP
Full name	Green fluorescent protein
Synonyms	
Swissprot	P42212

Target Background

Green fluorescence protein (GFP) is a 27 kDa protein derived from the jellyfish *Aequorea victoria*, which emits green light (emission peak at a wavelength of 509 nm) when excited by blue light (excitation peak at a wavelength of 395 nm). Green Fluorescent Protein (GFP) has become an invaluable tool in cell biology research, since its intrinsic fluorescence can be visualized in living cells.

订购热线: 4008-898-798

Applications

Western blotting

Predicted band size: 27 kDa

Positive control: Green fluorescent protein

Recommended dilution: 5000-20000

Gel: 12%SDS-PAGE

Lysate:

0.0025/0.0125/0.025/0.05/0.075/0.1/0.125

µg

Lane

1-7:

0.0025/0.0125/0.025/0.05/0.075/0.1/0.125

µg Green fluorescent protein

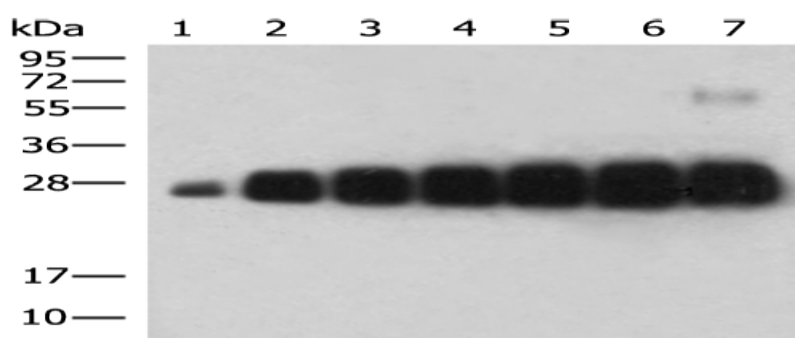
Primary antibody: ml110008(GFP

Antibody) at dilution 1/5000

Secondary antibody: Goat anti rabbit IgG

at 1/5000 dilution

Exposure time: 3 seconds



ELISA

Recommended dilution: 5000-10000

联系电话: 4008-898-798, 021-61725725

联系QQ: 2881505695, 2881505696

邮箱: mlbio_cn@yeah.net

网址: www.mlbio.cn

mlbio 酶联生物
Good elisakit producers
订购热线: 4008-898-798