

Anti-ACTG1 antibody

Cat. No.	ml120044
Package	25 µl/100 µl/200 µl
Storage	-20°C, pH7.4 PBS, 0.05% NaN ₃ , 40% Glycerol

Product overview

Description	Anti-ACTG1 rabbit polyclonal antibody
Applications	ELISA, WB
Immunogen	Fusion protein of human ACTG1
Reactivity	Human, Mouse, Rat
Content	0.1 mg/ml
Host species	Rabbit
Ig class	Immunogen-specific rabbit IgG
Purification	Antigen affinity purification

Target information

Symbol	ACTG1
Full name	actin, gamma 1
Synonyms	ACT, ACTG, BRWS2, DFNA20, DFNA26
Swissprot	P63261

Target Background

Actins are highly conserved proteins that are involved in various types of cell motility, and maintenance of the cytoskeleton. In vertebrates, three main groups of actin isoforms, alpha, beta and gamma have been identified. The alpha actins are found in muscle tissues and are a major constituent of the contractile apparatus. The beta and gamma actins co-exist in most cell types as components of the cytoskeleton, and as mediators of internal cell motility. Actin, gamma 1, encoded by this gene, is a cytoplasmic actin found in non-muscle cells. Mutations in this gene are associated with DFNA20/26, a subtype of autosomal dominant non-syndromic sensorineural progressive hearing loss. Alternative splicing results in multiple transcript variants.

订购热线: 4008-898-798

Applications

Western blotting

Predicted band size: 42 kDa

Positive control: Human liver cancer tissue

Recommended dilution: 200-1000

Gel: 10+12% SDS-PAGE

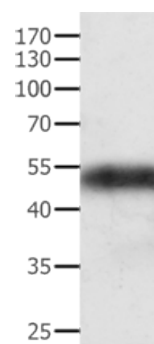
Lysate: 40 µg

Lane: Human liver cancer tissue

Primary antibody: ml120044(ACTG1 Antibody) at dilution 1/200

Secondary antibody: Goat anti rabbit IgG at 1/8000 dilution

Exposure time: 5 seconds



ELISA

Recommended dilution: 1000-5000

联系电话: 4008-898-798, 021-61725725

联系QQ: 2881505695, 2881505696

邮箱: mlbio_cn@yeah.net

网址: www.mlbio.cn