

## Anti-RELA antibody

<b>Cat. No.</b>	ml120135
<b>Package</b>	25 µl/100 µl/200 µl
<b>Storage</b>	-20°C, pH7.4 PBS, 0.05% NaN <sub>3</sub> , 40% Glycerol

### Product overview

<b>Description</b>	Anti-RELA rabbit polyclonal antibody
<b>Applications</b>	ELISA, WB
<b>Immunogen</b>	Fusion protein of human RELA
<b>Reactivity</b>	Human, Mouse
<b>Content</b>	0.2 mg/ml
<b>Host species</b>	Rabbit
<b>Ig class</b>	Immunogen-specific rabbit IgG
<b>Purification</b>	Antigen affinity purification

### Target information

<b>Symbol</b>	RELA
<b>Full name</b>	v-rel avian reticuloendotheliosis viral oncogene homolog A
<b>Synonyms</b>	p65; NFκB3
<b>Swissprot</b>	Q04206

### Target Background

NF-kappa-B is a ubiquitous transcription factor involved in several biological processes. It is held in the cytoplasm in an inactive state by specific inhibitors. Upon degradation of the inhibitor, NF-kappa-B moves to the nucleus and activates transcription of specific genes. NF-kappa-B is composed of NFκB1 or NFκB2 bound to either REL, RELA, or RELB. The most abundant form of NF-kappa-B is NFκB1 complexed with the product of this gene, RELA. Four transcript variants encoding different isoforms have been found for this gene.

订购热线: 4008-898-798

#### Applications

##### Western blotting

Predicted band size: 60 kDa

Positive control: NIH/3T3 cells

Recommended dilution: 200-1000

Gel: 10%SDS-PAGE

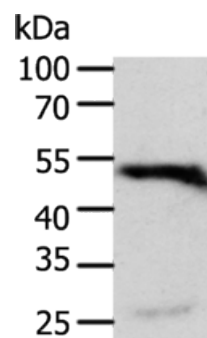
Lysate: 40 µg

Lane: NIH/3T3 cells

Primary antibody: ml120135(RELA Antibody) at dilution 1/300

Secondary antibody: Goat anti rabbit IgG at 1/8000 dilution

Exposure time: 30 minutes



##### ELISA

Recommended dilution: 1000-2000

联系电话: 4008-898-798, 021-61725725

联系QQ: 2881505695, 2881505696

邮箱: [mlbio\\_cn@yeah.net](mailto:mlbio_cn@yeah.net)

网址: [www.mlbio.cn](http://www.mlbio.cn)