

Anti-KRT15 antibody

Cat. No.	ml120234
Package	25 µl/100 µl/200 µl
Storage	-20°C, pH7.4 PBS, 0.05% NaN ₃ , 40% Glycerol

Product overview

Description	Anti-KRT15 rabbit polyclonal antibody
Applications	ELISA, WB
Immunogen	Fusion protein of human KRT15
Reactivity	Human, Mouse, Rat
Content	0.3 mg/ml
Host species	Rabbit
Ig class	Immunogen-specific rabbit IgG
Purification	Antigen affinity purification

Target information

Symbol	KRT15
Full name	Keratin, type I cytoskeletal 15
Synonyms	K15, CK15, K1CO
Swissprot	P19012

Target Background

The protein encoded by this gene is a member of the keratin gene family. The keratins are intermediate filament proteins responsible for the structural integrity of epithelial cells and are subdivided into cytokeratins and hair keratins. Most of the type I cytokeratins consist of acidic proteins which are arranged in pairs of heterotypic keratin chains and are clustered in a region on chromosome 17q21.2.

订购热线: 4008-898-798

Applications

Western blotting

Predicted band size: 49 kDa

Positive control: Human ovarian cancer tissue

Recommended dilution: 500-2000

Gel: 10%SDS-PAGE

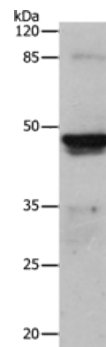
Lysate: 24 µg

Lane: Human ovarian cancer tissue

Primary antibody: ml120234(KRT15 Antibody) at dilution 1/300

Secondary antibody: Goat anti rabbit IgG at 1/8000 dilution

Exposure time: 1 minute



ELISA

Recommended dilution: 1000-5000

联系电话: 4008-898-798, 021-61725725

联系QQ: 2881505695, 2881505696

邮箱: mlbio_cn@yeah.net

网址: www.mlbio.cn