

Anti-BTG2 antibody

| | |
|-----------------|---|
| Cat. No. | ml120326 |
| Package | 25 µl/100 µl/200 µl |
| Storage | -20°C, pH7.4 PBS, 0.05% NaN ₃ , 40% Glycerol |

Product overview

| | |
|---------------------|--------------------------------------|
| Description | Anti-BTG2 rabbit polyclonal antibody |
| Applications | ELISA, WB |
| Immunogen | Full length fusion protein |
| Reactivity | Human, Mouse, Rat |
| Content | 0.4 mg/ml |
| Host species | Rabbit |
| Ig class | Immunogen-specific rabbit IgG |
| Purification | Antigen affinity purification |

Target information

| | |
|------------------|---------------------------------|
| Symbol | BTG2 |
| Full name | BTG anti-proliferation factor 2 |
| Synonyms | PC3; APRO1; TIS21 |
| Swissprot | P78543 |

Target Background

The protein encoded by this gene is a member of the BTG/Tob family. This family has structurally related proteins that appear to have antiproliferative properties. This encoded protein is involved in the regulation of the G1/S transition of the cell cycle.

订购热线: 4008-898-798

Applications

Western blotting

Predicted band size: 17 kDa

Positive control: Human left kidney cancer tissue lysate

Recommended dilution: 200-1000

Gel: 12%SDS-PAGE

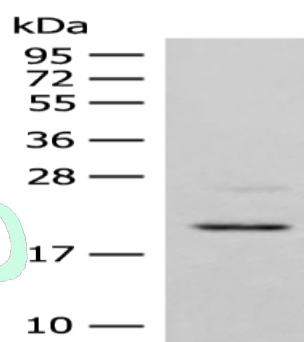
Lysate: 40 µg

Lane: Human left kidney cancer tissue lysate

Primary antibody: ml120326(BTG2 Antibody) at dilution 1/200

Secondary antibody: Goat anti rabbit IgG at 1/8000 dilution

Exposure time: 1 minute



ELISA

Recommended dilution: 5000-10000

联系电话: 4008-898-798, 021-61725725

联系QQ: 2881505695, 2881505696

邮箱: mlbio_cn@yeah.net

网址: www.mlbio.cn