

Anti-CAPN1 antibody

Cat. No.	ml120328
Package	25 µl/100 µl/200 µl
Storage	-20°C, pH7.4 PBS, 0.05% NaN ₃ , 40% Glycerol

Product overview

Description	Anti-CAPN1 rabbit polyclonal antibody
Applications	ELISA, WB
Immunogen	Fusion protein of human CAPN1
Reactivity	Human, Mouse, Rat
Content	0.4 mg/ml
Host species	Rabbit
Ig class	Immunogen-specific rabbit IgG
Purification	Antigen affinity purification

Target information

Symbol	CAPN1
Full name	Calpain-1 catalytic subunit
Synonyms	CANP, muCL, CANP1, CANPL1, muCANP
Swissprot	P07384

Target Background

The calpains, calcium-activated neutral proteases, are nonlysosomal, intracellular cysteine proteases. The mammalian calpains include ubiquitous, stomach-specific, and muscle-specific proteins. The ubiquitous enzymes consist of heterodimers with distinct large, catalytic subunits associated with a common small, regulatory subunit. This gene encodes the large subunit of the ubiquitous enzyme, calpain 1. Several transcript variants encoding two different isoforms have been found for this gene.

订购热线: 4008-898-798

Applications

Western blotting

Predicted band size: 82 kDa

Positive control: Human fetal kidney tissue

Recommended dilution: 200-1000

Gel: 10%SDS-PAGE

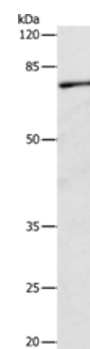
Lysate: 30 µg

Lane: Human fetal kidney tissue

Primary antibody: ml120328(CAPN1 Antibody) at dilution 1/500

Secondary antibody: Goat anti rabbit IgG at 1/8000 dilution

Exposure time: 1 minute



ELISA

Recommended dilution: 1000-5000

联系电话: 4008-898-798, 021-61725725

联系QQ: 2881505695, 2881505696

邮箱: mlbio_cn@yeah.net

网址: www.mlbio.cn