

Anti-CAPN2 antibody

Cat. No.	ml120329
Package	25 µl/100 µl/200 µl
Storage	-20°C, pH7.4 PBS, 0.05% NaN ₃ , 40% Glycerol

Product overview

Description	Anti-CAPN2 rabbit polyclonal antibody
Applications	ELISA, WB
Immunogen	Fusion protein of human CAPN2
Reactivity	Human, Mouse, Rat
Content	0.3 mg/ml
Host species	Rabbit
Ig class	Immunogen-specific rabbit IgG
Purification	Antigen affinity purification

Target information

Symbol	CAPN2
Full name	Calpain-2 catalytic subunit
Synonyms	CANP2, mCANP, CANPL2, CANPml
Swissprot	P17655

Target Background

The calpains, calcium-activated neutral proteases, are nonlysosomal, intracellular cysteine proteases. The mammalian calpains include ubiquitous, stomach-specific, and muscle-specific proteins. The ubiquitous enzymes consist of heterodimers with distinct large, catalytic subunits associated with a common small, regulatory subunit. This gene encodes the large subunit of the ubiquitous enzyme, calpain 2. Multiple heterogeneous transcriptional start sites in the 5' UTR have been reported. Two transcript variants encoding different isoforms have been found for this gene.

订购热线: 4008-898-798

Applications

Western blotting

Predicted band size: 80 kDa

Positive control: Mouse brain and skin tissue, 293T cells

Recommended dilution: 200-1000

Gel: 10% SDS-PAGE

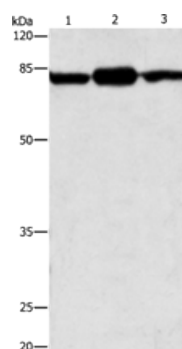
Lysate: 30 µg

Lane 1-3: Mouse brain tissue, Mouse skin tissue, 293T cells

Primary antibody: ml120329(CAPN2 Antibody) at dilution 1/200

Secondary antibody: Goat anti rabbit IgG at 1/8000 dilution

Exposure time: 40 seconds



ELISA

Recommended dilution: 1000-5000

联系电话: 4008-898-798, 021-61725725

联系QQ: 2881505695, 2881505696

邮箱: mlbio_cn@yeah.net

网址: www.mlbio.cn