

Anti-EGR1 antibody

Cat. No.	ml120585
Package	25 µl/100 µl/200 µl
Storage	-20°C, pH7.4 PBS, 0.05% NaN ₃ , 40% Glycerol

Product overview

Description	Anti-EGR1 rabbit polyclonal antibody
Applications	ELISA, WB
Immunogen	Fusion protein of human EGR1
Reactivity	Human, Mouse, Rat
Content	0.1 mg/ml
Host species	Rabbit
Ig class	Immunogen-specific rabbit IgG
Purification	Antigen affinity purification

Target information

Symbol	EGR1
Full name	early growth response 1
Synonyms	TIS8, AT225, G0S30, NGFI-A, ZNF225, KROX-24, ZIF-268
Swissprot	P18146

Target Background

EGR-1 (Early growth response protein 1) also known as Zif268 (zinc finger protein 225) or NGFI-A (nerve growth factor-induced protein A) is a protein that in humans is encoded by the EGR1 gene. The protein encoded by this gene belongs to the EGR family of C2H2-type zinc-finger proteins. It is a nuclear protein and functions as a transcriptional regulator. The products of target genes it activates are required for differentiation and mitogenesis. Studies suggest this is a cancer suppressor gene. Recognizes and binds to the DNA sequence 5'-CGCCCCGC-3'(EGR-site).

订购热线: 4008-898-798

Applications

Western blotting

Predicted band size: 58 kDa

Positive control: RAW264.7 and NIH/3T3 cells

Recommended dilution: 200-1000

Gel: 8%SDS-PAGE

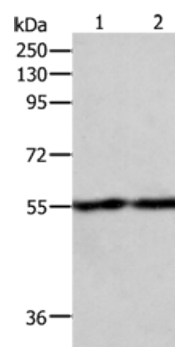
Lysate: 50 µg

Lane 1-2: RAW264.7, NIH/3T3 cells

Primary antibody: ml120585(EGR1 Antibody) at dilution 1/400

Secondary antibody: Goat anti rabbit IgG at 1/8000 dilution

Exposure time: 2 minutes



ELISA

Recommended dilution: 1000-5000

联系电话: 4008-898-798, 021-61725725

联系QQ: 2881505695, 2881505696

邮箱: mlbio_cn@yeah.net

网址: www.mlbio.cn