

Anti-GDF15 antibody

Cat. No.	ml120686
Package	25 µl/100 µl/200 µl
Storage	-20°C, pH7.4 PBS, 0.05% NaN ₃ , 40% Glycerol

Product overview

Description	Anti-GDF15 rabbit polyclonal antibody
Applications	ELISA, WB
Immunogen	Fusion protein of human GDF15
Reactivity	Human, Mouse
Content	0.2 mg/ml
Host species	Rabbit
Ig class	Immunogen-specific rabbit IgG
Purification	Antigen affinity purification

Target information

Symbol	GDF15
Full name	growth differentiation factor 15
Synonyms	PDF, MIC1, PLAB, MIC-1, NAG-1, PTGFB, GDF-15
Swissprot	Q99988

Target Background

Bone morphogenetic proteins (e.g., BMP9; MIM 605120) are members of the transforming growth factor-beta (see TGFB1; MIM 190180) superfamily and regulate tissue differentiation and maintenance. They are synthesized as precursor molecules that are processed at a dibasic cleavage site to release C-terminal domains containing a characteristic motif of 7 conserved cysteines in the mature protein. GDF15 mRNA is most abundant in the liver, with lower levels seen in some other tissues. Its expression in liver can be significantly up-regulated in during injury of organs such as liver, kidney, heart and lung.

订购热线: 4008-898-798

Applications

Western blotting

Predicted band size: 34 kDa

Positive control: Mouse liver tissue

Recommended dilution: 200-1000

Gel: 10%SDS-PAGE

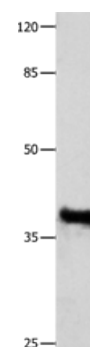
Lysate: 40 µg

Lane: Mouse liver tissue

Primary antibody: ml120686(GDF15 Antibody) at dilution 1/250

Secondary antibody: Goat anti rabbit IgG at 1/8000 dilution

Exposure time: 1 minute



ELISA

Recommended dilution: 1000-5000

联系电话: 4008-898-798, 021-61725725

联系QQ: 2881505695, 2881505696

邮箱: mlbio_cn@yeah.net

网址: www.mlbio.cn