

Anti-AGBL3 antibody

Cat. No.	ml121536
Package	25 µl/100 µl/200 µl
Storage	-20°C, pH7.4 PBS, 0.05% NaN ₃ , 40% Glycerol

Product overview

Description	Anti-AGBL3 rabbit polyclonal antibody
Applications	ELISA, IHC
Immunogen	Fusion protein of human AGBL3
Reactivity	Human, Mouse
Content	0.3 mg/ml
Host species	Rabbit
Ig class	Immunogen-specific rabbit IgG
Purification	Antigen affinity purification

Target information

Symbol	AGBL3
Full name	ATP/GTP binding protein-like 3
Synonyms	
Swissprot	Q8NEM8

Target Background

CCP3 (cytosolic carboxypeptidase 3), also known as AGBL3 (ATP/GTP-binding protein-like 3), is a 1,001 amino acid cytosolic protein that exists as four alternatively spliced isoforms and belongs to the peptidase M14 family. As a metallocarboxypeptidase, CCP3 binds one zinc ion per subunit and may play a role in the processing of tubulin. The gene that encodes CCP3 consists of approximately 161,457 bases and maps to human chromosome 7q33. Housing over 1,000 genes, chromosome 7 comprises nearly 5% of the human genome. Chromosome 7 has been linked to Osteogenesis imperfecta, Pendred syndrome, Lissencephaly, Citrullinemia and Shwachman-Diamond syndrome.

订购热线: 4008-898-798

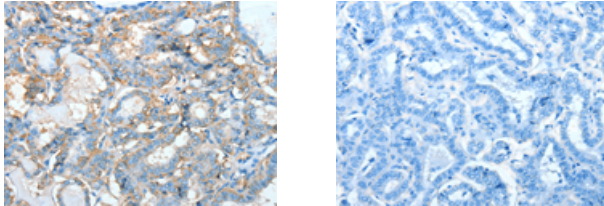
Applications

Immunohistochemistry

Predicted cell location: Cytoplasm

Positive control: Human thyroid cancer

Recommended dilution: 25-100



The image on the left is immunohistochemistry of paraffin-embedded Human thyroid cancer tissue using ml121536(AGBL3 Antibody) at dilution 1/45, on the right is treated with fusion protein. (Original magnification: ×200)

ELISA

Recommended dilution: 2000-5000

联系电话: 4008-898-798, 021-61725725

联系QQ: 2881505695, 2881505696

邮箱: mlbio_cn@yeah.net

网址: www.mlbio.cn