

Anti-HPSE antibody

Cat. No.	ml120758
Package	25 µl/100 µl/200 µl
Storage	-20°C, pH7.4 PBS, 0.05% NaN ₃ , 40% Glycerol

Product overview

Description	Anti-HPSE rabbit polyclonal antibody
Applications	ELISA, WB
Immunogen	Fusion protein of human HPSE
Reactivity	Human
Content	0.5 mg/ml
Host species	Rabbit
Ig class	Immunogen-specific rabbit IgG
Purification	Antigen affinity purification

Target information

Symbol	HPSE
Full name	heparanase
Synonyms	HPA, HPA1, HPR1, HSE1, HPSE1
Swissprot	Q9Y251

Target Background

Heparan sulfate proteoglycans are major components of the basement membrane and extracellular matrix. The protein encoded by this gene is an enzyme that cleaves heparan sulfate proteoglycans to permit cell movement through remodeling of the extracellular matrix. In addition, this cleavage can release bioactive molecules from the extracellular matrix. Several transcript variants encoding different isoforms have been found for this gene.

订购热线: 4008-898-798

Applications

Western blotting

Predicted band size: 61 kDa

Positive control: 231 cells

Recommended dilution: 500-2000

Gel: 10% SDS-PAGE

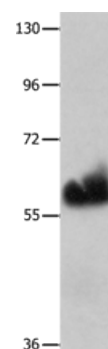
Lysate: 60 µg

Lane: 231 cells

Primary antibody: ml120758 (HPSE Antibody) at dilution 1/100

Secondary antibody: Goat anti rabbit IgG at 1/8000 dilution

Exposure time: 5 minutes



ELISA

Recommended dilution: 2000-5000

联系电话: 4008-898-798, 021-61725725

联系QQ: 2881505695, 2881505696

邮箱: mlbio_cn@yeah.net

网址: www.mlbio.cn