

## Anti-HSPH1 antibody

<b>Cat. No.</b>	ml120793
<b>Package</b>	25 µl/100 µl/200 µl
<b>Storage</b>	-20°C, pH7.4 PBS, 0.05% NaN <sub>3</sub> , 40% Glycerol

### Product overview

<b>Description</b>	Anti-HSPH1 rabbit polyclonal antibody
<b>Applications</b>	ELISA, WB
<b>Immunogen</b>	Fusion protein of human HSPH1
<b>Reactivity</b>	Human, Mouse, Rat
<b>Content</b>	0.2 mg/ml
<b>Host species</b>	Rabbit
<b>Ig class</b>	Immunogen-specific rabbit IgG
<b>Purification</b>	Antigen affinity purification

### Target information

<b>Symbol</b>	HSPH1
<b>Full name</b>	Heat shock 105kDa/110kDa protein 1
<b>Synonyms</b>	HSP105; HSP105A; HSP105B; NY-CO-25
<b>Swissprot</b>	Q92598

### Target Background

Heat shock protein 105 kDa is a protein that in humans is encoded by the HSPH1 gene. Prevents the aggregation of denatured proteins in cells under severe stress, on which the ATP levels decrease markedly. Inhibits HSPA8/HSC70 ATPase and chaperone activities. Highly expressed in testis. Present at lower levels in most brain regions, except cerebellum. Overexpressed in cancer cells. Phosphorylation on Ser-509 may be important for regulation of the HSPA8/HSC70 chaperone activity.

订购热线: 4008-898-798

#### Applications

##### Western blotting

Predicted band size: 97 kDa

Positive control: PC3 cells, human colon cancer and liver cancer tissue

Recommended dilution: 500-2000

Gel: 8%SDS-PAGE

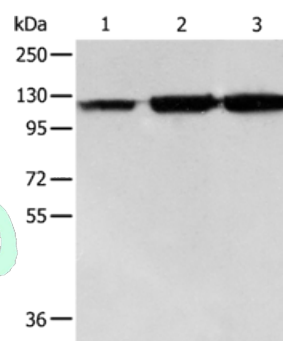
Lysate: 40 µg

Lane 1-3: PC3 cells, human colon cancer tissue, Human liver cancer tissue

Primary antibody: ml120793(HSPH1 Antibody) at dilution 1/500

Secondary antibody: Goat anti rabbit IgG at 1/8000 dilution

Exposure time: 40 seconds



##### ELISA

Recommended dilution: 2000-5000

联系电话: 4008-898-798, 021-61725725

联系QQ: 2881505695, 2881505696

邮箱: [mlbio\\_cn@yeah.net](mailto:mlbio_cn@yeah.net)

网址: [www.mlbio.cn](http://www.mlbio.cn)