

Anti-MAPK8 antibody

Cat. No.	ml120893
Package	25 µl/100 µl/200 µl
Storage	-20°C, pH7.4 PBS, 0.05% NaN ₃ , 40% Glycerol

Product overview

Description	Anti-MAPK8 rabbit polyclonal antibody
Applications	ELISA, WB
Immunogen	Fusion protein of human MAPK8
Reactivity	Human, Mouse, Rat
Content	1.9 mg/ml
Host species	Rabbit
Ig class	Immunogen-specific rabbit IgG
Purification	Antigen affinity purification

Target information

Symbol	MAPK8
Full name	mitogen-activated protein kinase 8
Synonyms	JNK; JNK1; PRKM8; SAPK1; JNK-46; JNK1A2; SAPK1c; JNK21B1/2
Swissprot	P45983

Target Background

The protein encoded by this gene is a member of the MAP kinase family. MAP kinases act as an integration point for multiple biochemical signals, and are involved in a wide variety of cellular processes such as proliferation, differentiation, transcription regulation and development. This kinase is activated by various cell stimuli, and targets specific transcription factors, and thus mediates immediate-early gene expression in response to cell stimuli.

订购热线: 4008-898-798

Applications

Western blotting

Predicted band size: 48 kDa

Positive control: K562 and hela cell

Recommended dilution: 1000-5000

Gel: 8%SDS-PAGE

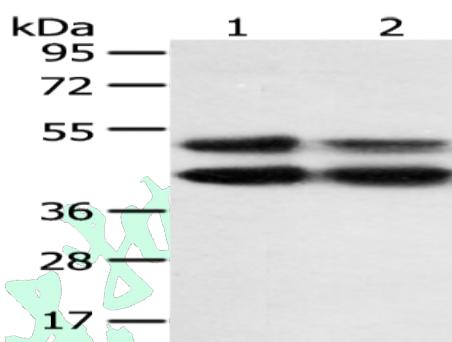
Lysate: 40 µg

Lane 1-2: K562 and hela cell

Primary antibody: ml120893(MAPK8 Antibody) at dilution 1/600

Secondary antibody: Goat anti rabbit IgG at 1/8000 dilution

Exposure time: 10 seconds



ELISA

Recommended dilution: 2000-10000

联系电话: 4008-898-798, 021-61725725

联系QQ: 2881505695, 2881505696

邮箱: mlbio_cn@yeah.net

网址: www.mlbio.cn