

Anti-MASP1 antibody

Cat. No.	ml120954
Package	25 µl/100 µl/200 µl
Storage	-20°C, pH7.4 PBS, 0.05% NaN ₃ , 40% Glycerol

Product overview

Description	Anti-MASP1 rabbit polyclonal antibody
Applications	ELISA, WB
Immunogen	Fusion protein of human MASP1
Reactivity	Human, Mouse, Rat
Content	0.4 mg/ml
Host species	Rabbit
Ig class	Immunogen-specific rabbit IgG
Purification	Antigen affinity purification

Target information

Symbol	MASP1
Full name	mannan-binding lectin serine peptidase 1 (C4/C2 activating component of Ra-reactive factor)
Synonyms	3MC1; MAP1; MASP; RaRF; CRARF; MASP3; MAP44; PRSS5; CRARF1
Swissprot	P48740

Target Background

This gene encodes a serine protease that functions as a component of the lectin pathway of complement activation. The complement pathway plays an essential role in the innate and adaptive immune response. The encoded protein is synthesized as a zymogen and is activated when it complexes with the pathogen recognition molecules of lectin pathway, the mannan-binding lectin and the ficolins. This protein is not directly involved in complement activation but may play a role as an amplifier of complement activation by cleaving complement C2 or by activating another complement serine protease, MASP-2. The encoded protein is also able to cleave fibrinogen and factor XIII and may be involved in coagulation. A splice variant of this gene which lacks the serine protease domain functions as an inhibitor of the complement pathway. Alternate splicing results in multiple transcript variants.

订购热线: 4008-898-798

Applications

Western blotting

Predicted band size: 79 kDa

Positive control: Hela cell, Mouse liver tissue, Rat liver tissue, Human heart tissue, Mouse brain tissue lysates

Recommended dilution: 200-1000

Gel: 8%SDS-PAGE

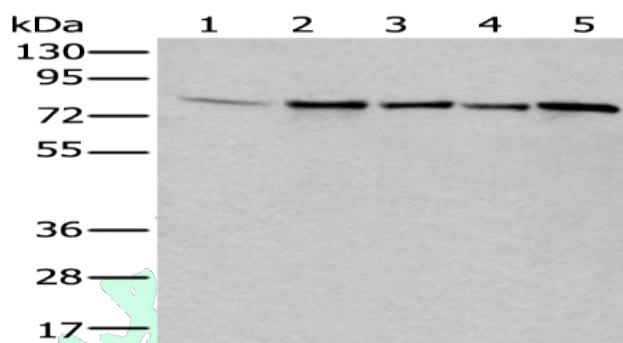
Lysate: 40 µg

Lane 1-5: Hela cell, Mouse liver tissue, Rat liver tissue, Human heart tissue, Mouse brain tissue lysates

Primary antibody: ml120954(MASP1 Antibody) at dilution 1/200

Secondary antibody: Goat anti rabbit IgG at 1/8000 dilution

Exposure time: 40 seconds



ELISA

Recommended dilution: 500-1000

联系电话: 4008-898-798, 021-61725725

联系QQ: 2881505695, 2881505696

邮箱: mlbio_cn@yeah.net

网址: www.mlbio.cn