

Anti-MMP28 antibody

Cat. No.	ml120993
Package	25 µl/100 µl/200 µl
Storage	-20°C, pH7.4 PBS, 0.05% NaN ₃ , 40% Glycerol

Product overview

Description	Anti-MMP28 rabbit polyclonal antibody
Applications	ELISA, WB
Immunogen	Fusion protein of human MMP28
Reactivity	Human, Mouse
Content	0.2 mg/ml
Host species	Rabbit
Ig class	Immunogen-specific rabbit IgG
Purification	Antigen affinity purification

Target information

Symbol	MMP28
Full name	matrix metalloproteinase 28
Synonyms	MM28, MMP25, MMP-28, EPILYSIN
Swissprot	Q9H239

Target Background

Proteins of the matrix metalloproteinase (MMP) family are involved in the breakdown of extracellular matrix for both normal physiological processes, such as embryonic development, reproduction and tissue remodeling, and disease processes, such as asthma and metastasis. This gene encodes a secreted enzyme that degrades casein. Its expression pattern suggests that it plays a role in tissue homeostasis and in wound repair. Transcript variants encoding different isoforms have been described.

订购热线: 4008-898-798

Applications

Western blotting

Predicted band size: 59 kDa

Positive control: Mouse heart tissue

Recommended dilution: 500-2000

Gel: 12% SDS-PAGE

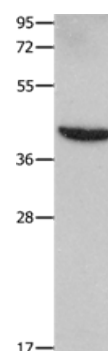
Lysate: 30 µg

Lane: Mouse heart tissue

Primary antibody: ml120993(MMP28 Antibody) at dilution 1/350

Secondary antibody: Goat anti rabbit IgG at 1/8000 dilution

Exposure time: 40 seconds



ELISA

Recommended dilution: 2000-5000

联系电话: 4008-898-798, 021-61725725

联系QQ: 2881505695, 2881505696

邮箱: mlbio_cn@yeah.net

网址: www.mlbio.cn