

Anti-NME7 antibody

Cat. No.	ml121040
Package	25 µl/100 µl/200 µl
Storage	-20°C, pH7.4 PBS, 0.05% NaN ₃ , 40% Glycerol

Product overview

Description	Anti-NME7 rabbit polyclonal antibody
Applications	ELISA, WB
Immunogen	Fusion protein of human NME7
Reactivity	Human, Mouse, Rat
Content	0.2 mg/ml
Host species	Rabbit
Ig class	Immunogen-specific rabbit IgG
Purification	Antigen affinity purification

Target information

Symbol	NME7
Full name	NME/NM23 family member 7
Synonyms	NDK7; NDK 7; MN23H7; nm23-H7
Swissprot	Q9Y5B8

Target Background

nm23-H7, also known as NME7 (non-metastatic cells 7), is a 376 amino acid protein that contains one DM10 domain and belongs to the NDK family. Using magnesium as a cofactor, nm23-H7 functions to catalyze the ATP-dependent creation of nucleoside triphosphates, thereby playing an essential role in metabolic pathways throughout the body. The gene encoding nm23-H7 maps to human chromosome 1, which spans 260 million base pairs, contains over 3,000 genes and comprises nearly 8% of the human genome. Chromosome 1 houses a large number of disease-associated genes, including those that are involved in familial adenomatous polyposis, Stickler syndrome, Parkinson's disease, Gaucher disease, schizophrenia and Usher syndrome. Aberrations in chromosome 1 are found in a variety of cancers, including head and neck cancer, malignant melanoma and multiple myeloma.

订购热线: 4008-898-798

Applications

Western blotting

Predicted band size: 42 kDa

Positive control: 293T cells

Recommended dilution: 200-1000

Gel: 10% SDS-PAGE

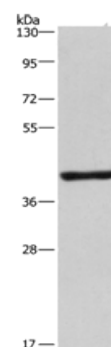
Lysate: 40 µg

Lane: 293T cells

Primary antibody: ml121040(NME7 Antibody) at dilution 1/300

Secondary antibody: Goat anti rabbit IgG at 1/8000 dilution

Exposure time: 2 minutes



ELISA

Recommended dilution: 1000-2000

联系电话: 4008-898-798, 021-61725725

联系QQ: 2881505695, 2881505696

邮箱: mlbio_cn@yeah.net

网址: www.mlbio.cn